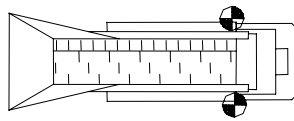


Configuration

- 1 Depress "progr" and keep it in.
- 2 Depress "on".
- 3 Release "progr" after 10 sec. and the last set configuration code is shown in "no" display.
- 4 If new configuration code is wanted this is set directly.
- 5 Depress "stand by" and the machine return to normal operation.

0008 Normal products:

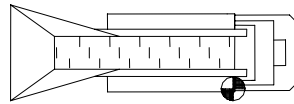


AM422-2

0040 Larger products:



0009 Normal products:



AM322-2

0041 Larger products:

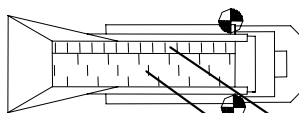


By changing the configurations code always end with depressing key 1 for 10 seconds during a new start-up – 99 will flash in “progr” display and the value are stored.

(By problems with systems always perform this point).

Basis adjustment speed:

AM422-2



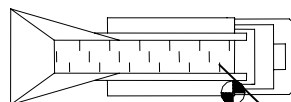
fast 80%

slow 40%



manual opening

AM322-2



fast 80%

slow 40%



manual opening