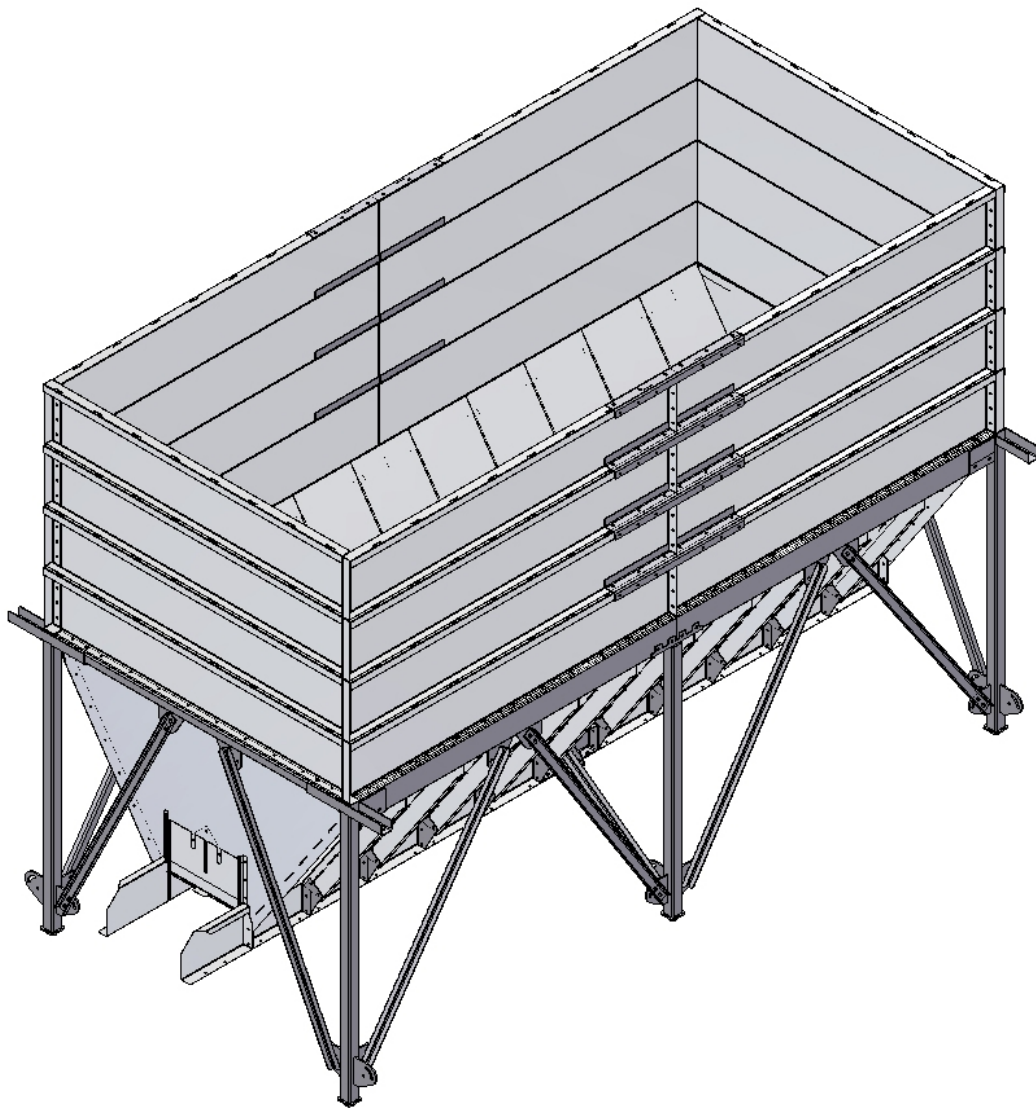


Assembly Manual

AVN Silo



A/S SKALS MASKINFABRIK
HOVEDGADEN 56
DK-8832 SKALS, DENMARK
Tlf.: +45 87 25 62 00
Fax: +45 86 69 49 99
E-mail: Skals@skals.dk
<http://www.skals.dk/>

INSTALLATION

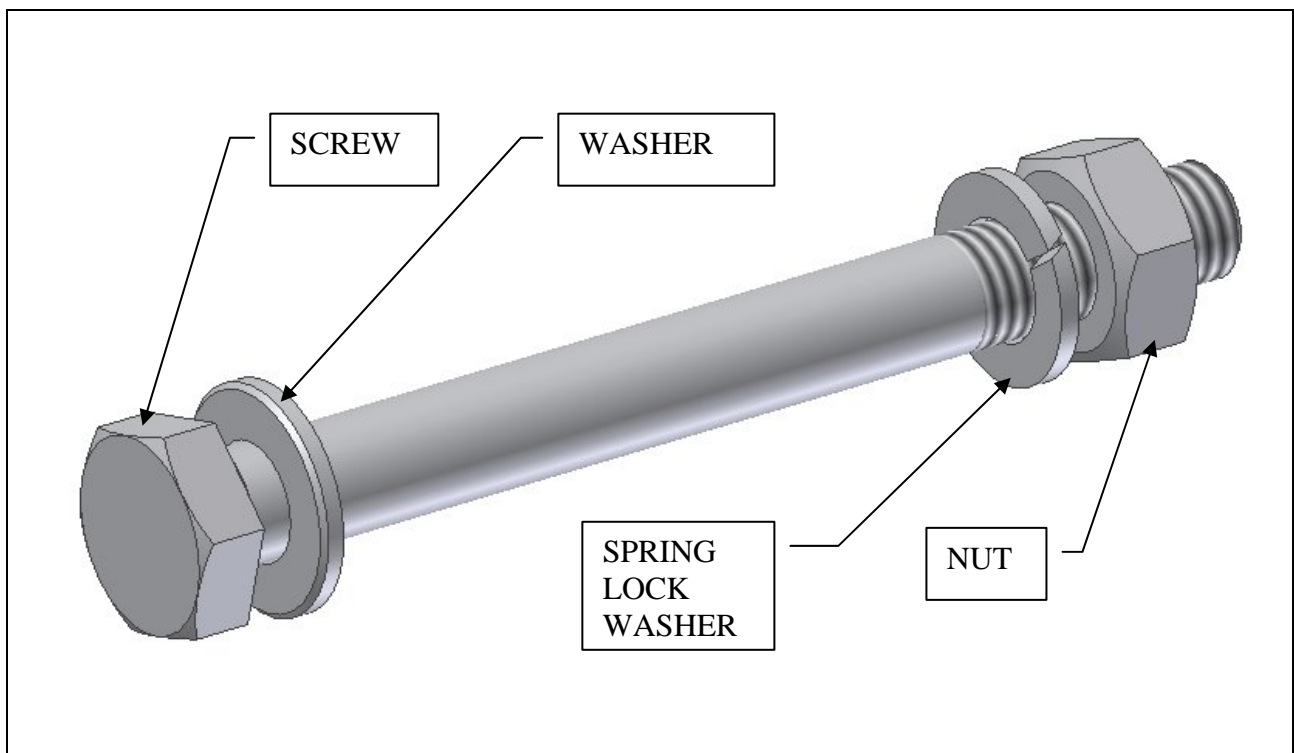
This assembly manual explains how to assembly the SKALS AVN silo.
The pictures in this manual show an AVN651 silo. In general it is the same way to assembly an AVN624, AVN633 or an AVN660 silo.

Last in the manual, it will be explained how to built two silos together.

GENERAL ASSEMBLY

For the assembly of the silo, there will be used some different sizes of screws, washers, lock-washers and nuts.

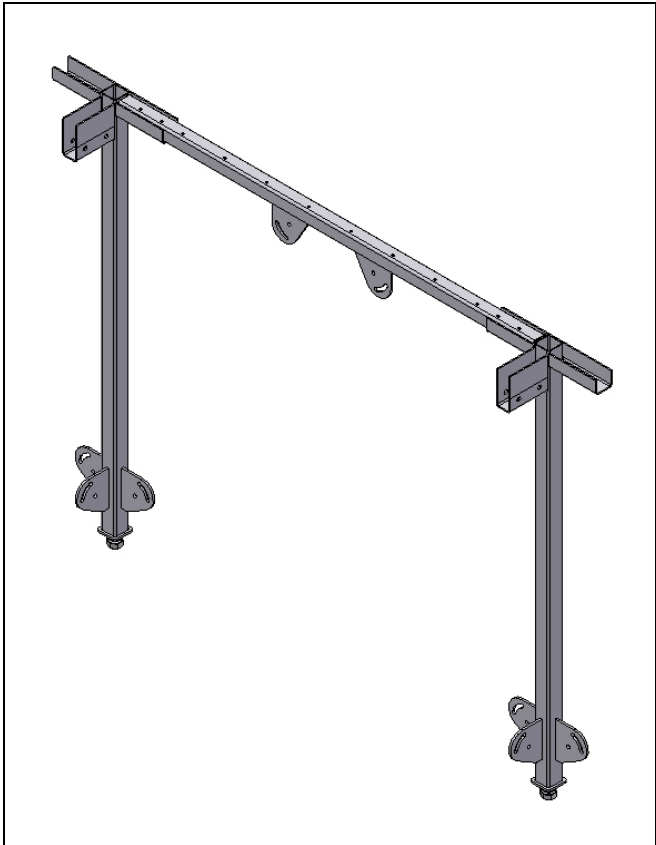
Always assembly the screw like shown at picture 1.



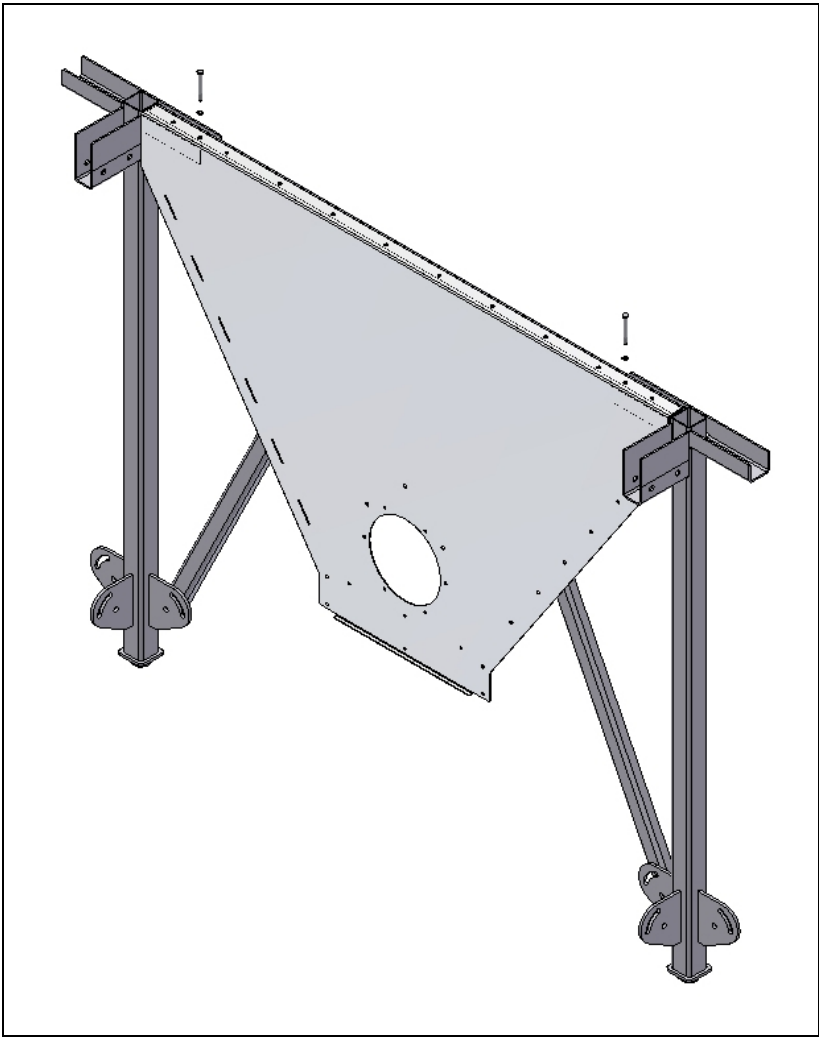
Picture 1



Picture 2

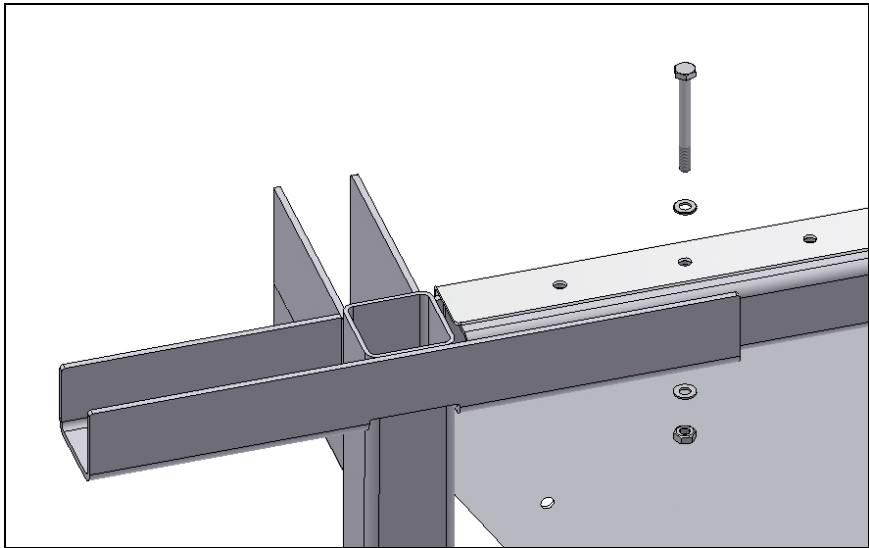


Picture 3



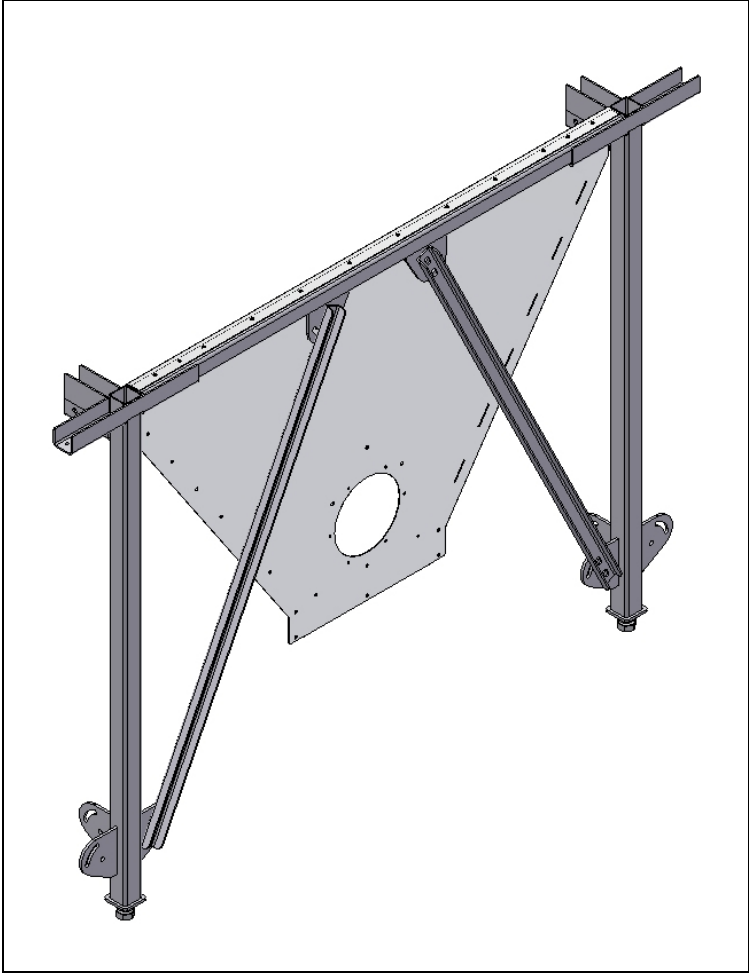
Picture 4

Use only two screws. Mount them in the holes as shown at picture 4.
See picture 5.

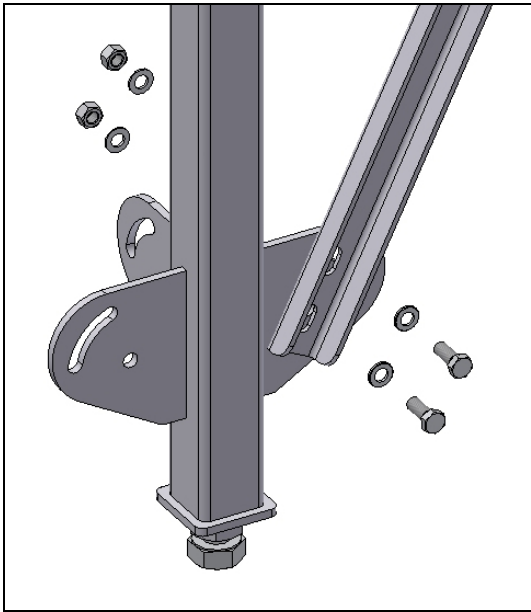


Picture 5

Use: M10x100 screw, washer, lock-washer and a nut.

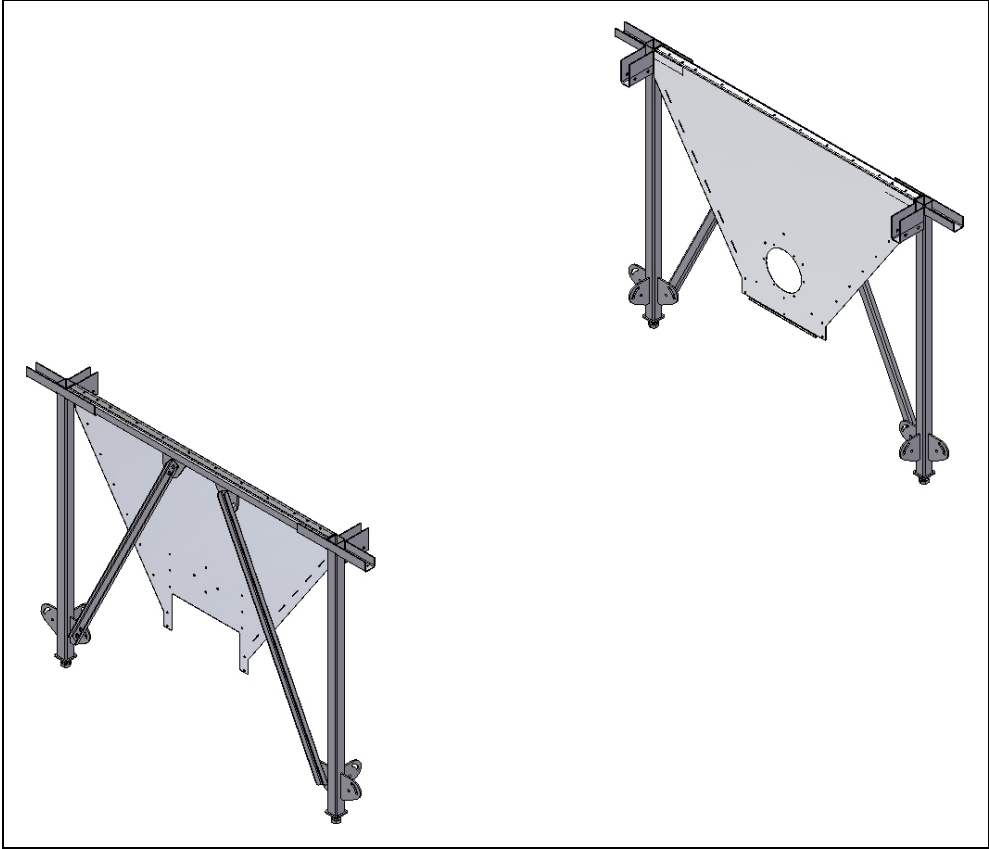


Picture 6

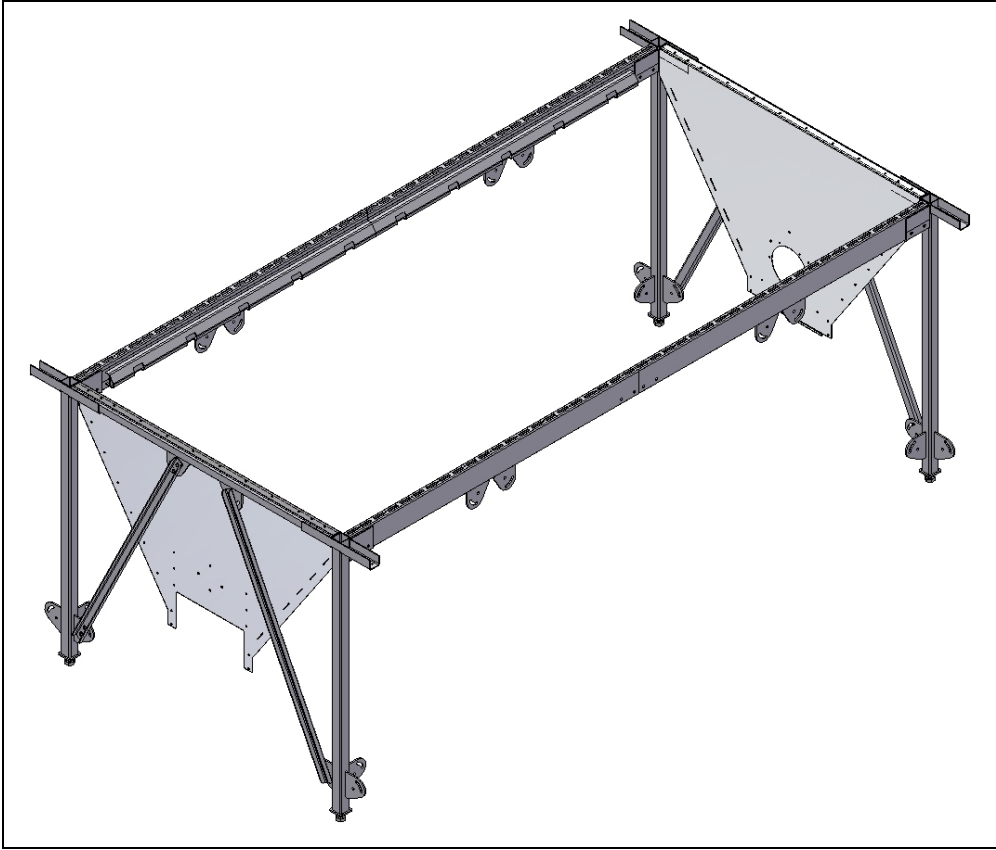


Picture 7

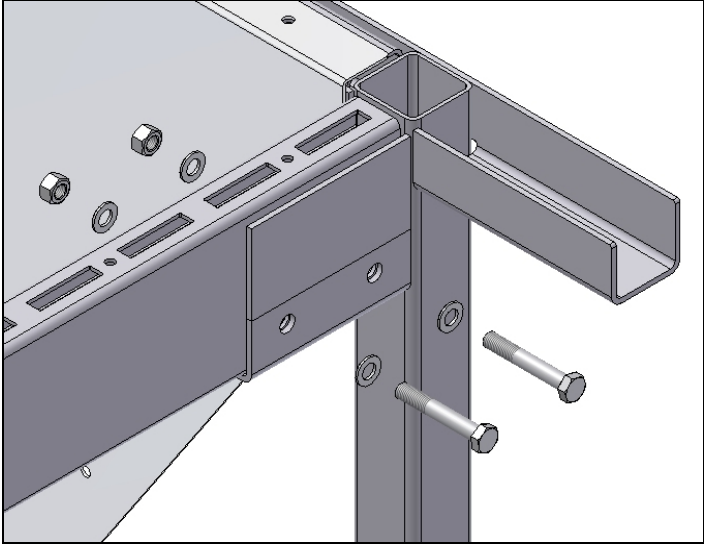
Use: M16x40 screw, washer, lock-washer and a nut.



Picture 8

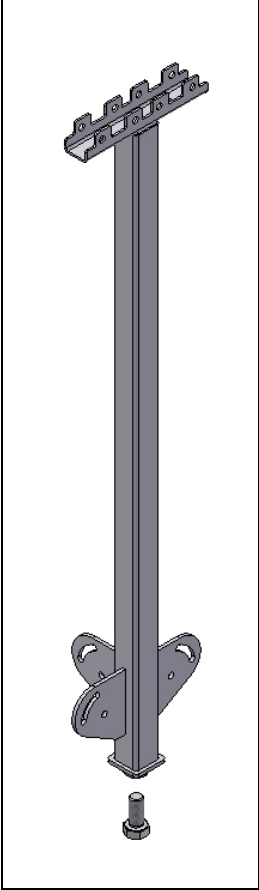


Picture 9



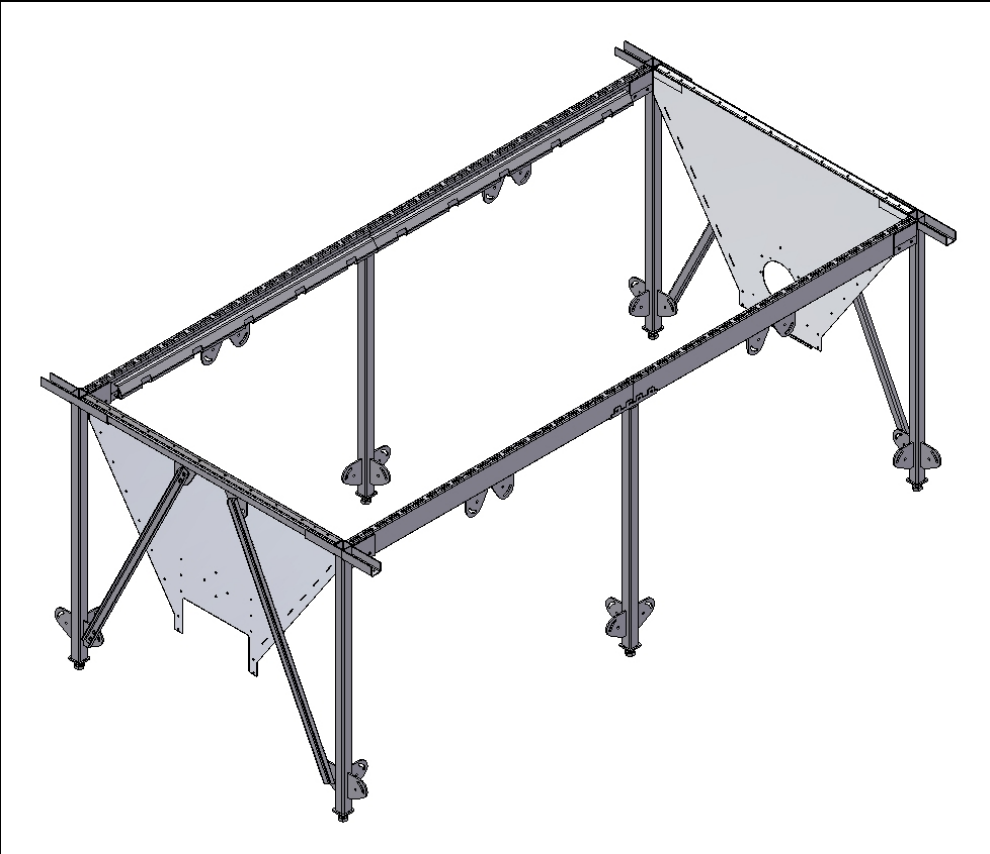
Picture 10

Use: M16x100 screw, washer, lock-washer and a nut.

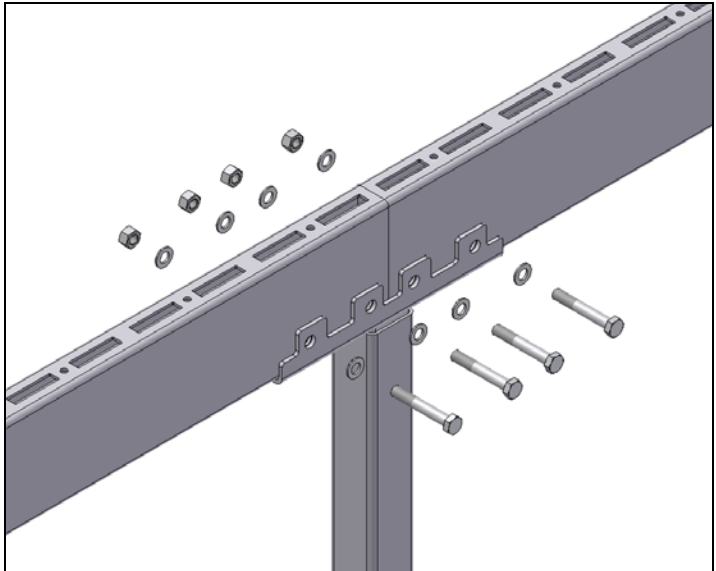


Picture 11

If the silo is an AVN651 or AVN660 there must be mounted two more legs in the middle of the silo.

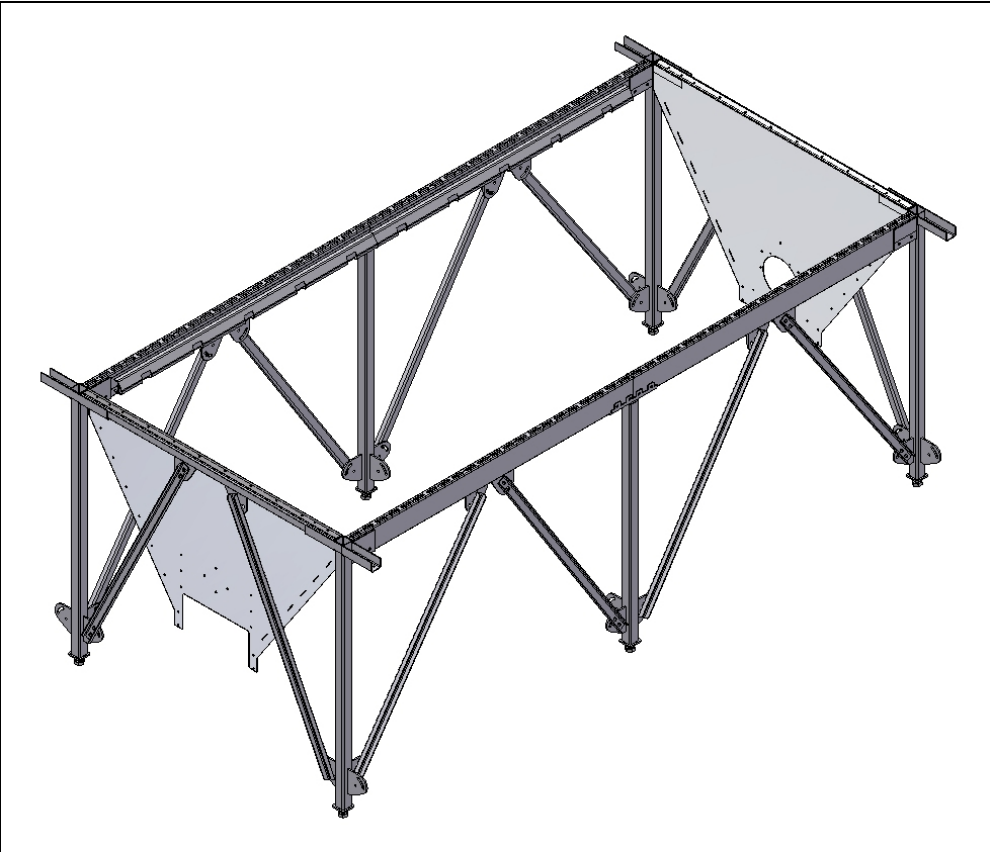


Picture 12

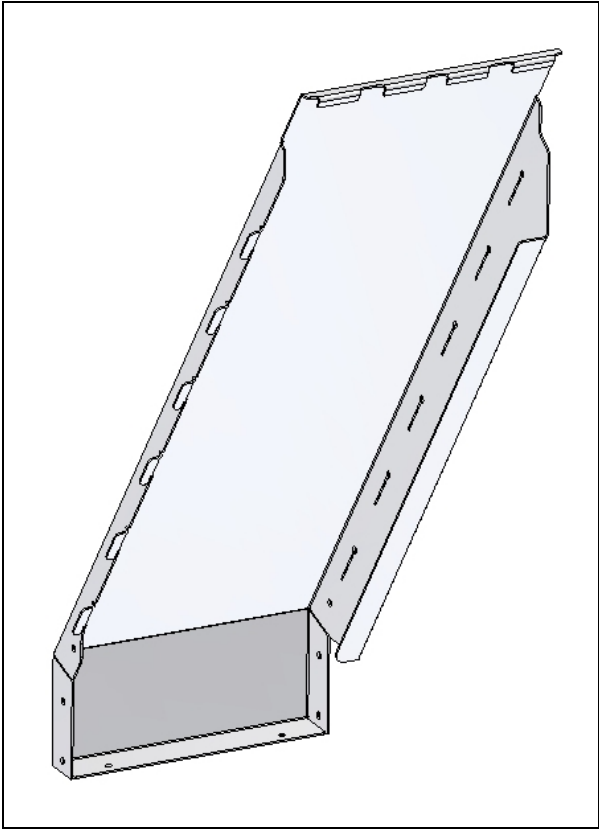


Picture 13

Use: M16x100 screw, washer, lock-washer and a nut.
(Only on the AVN651 and AVN660 silo.)

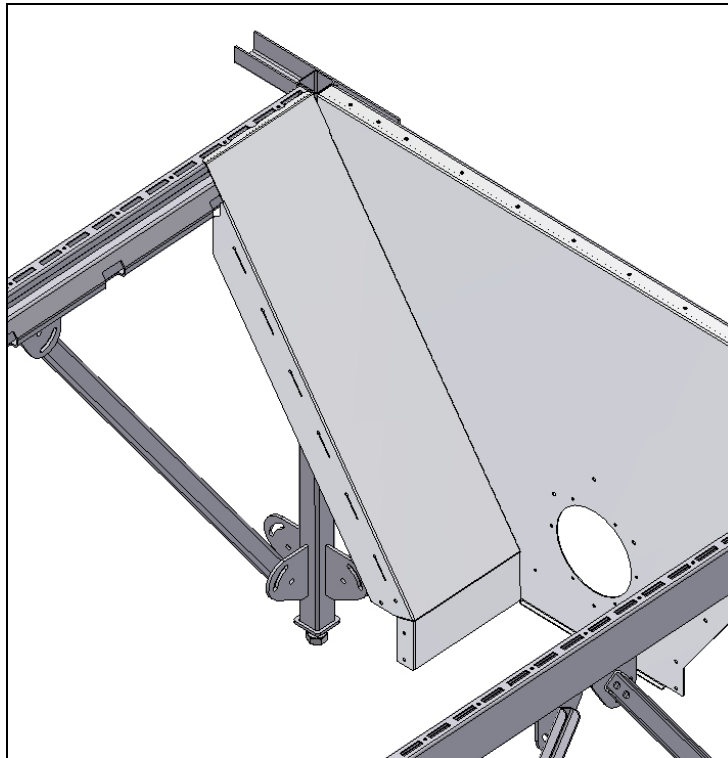


Picture 14



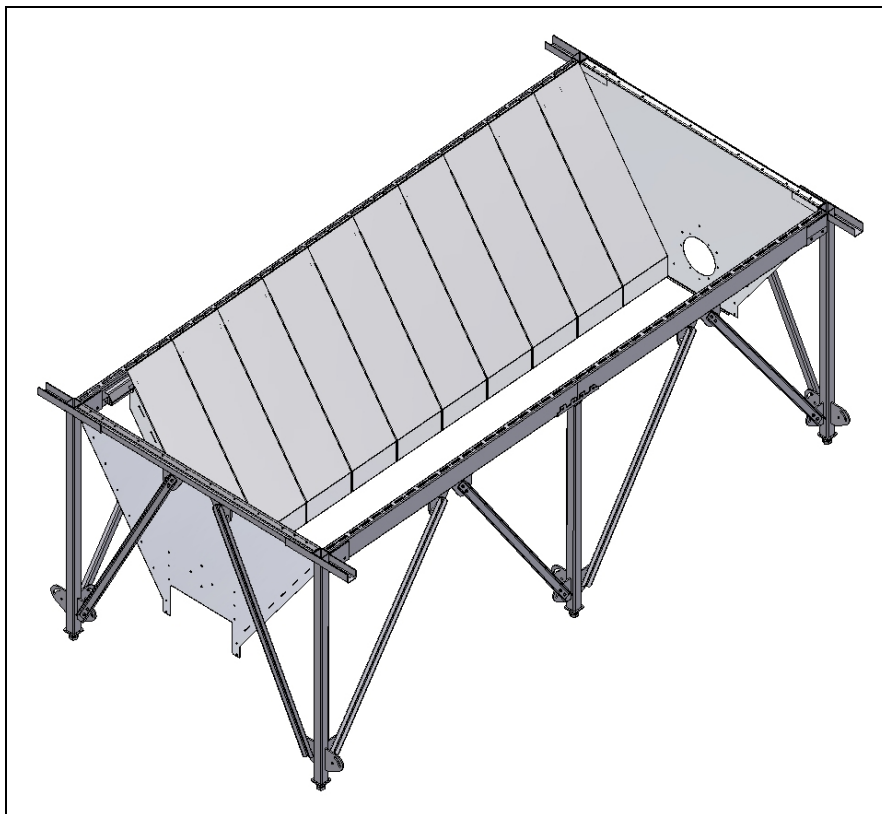
Picture 15

Now find these plates



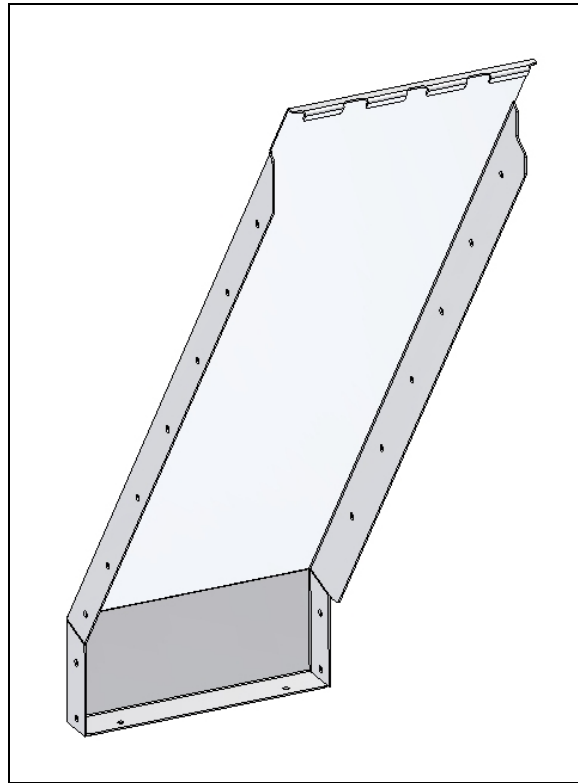
Picture 16

Mount the plate without any tools. Just click the plate into the square holes.

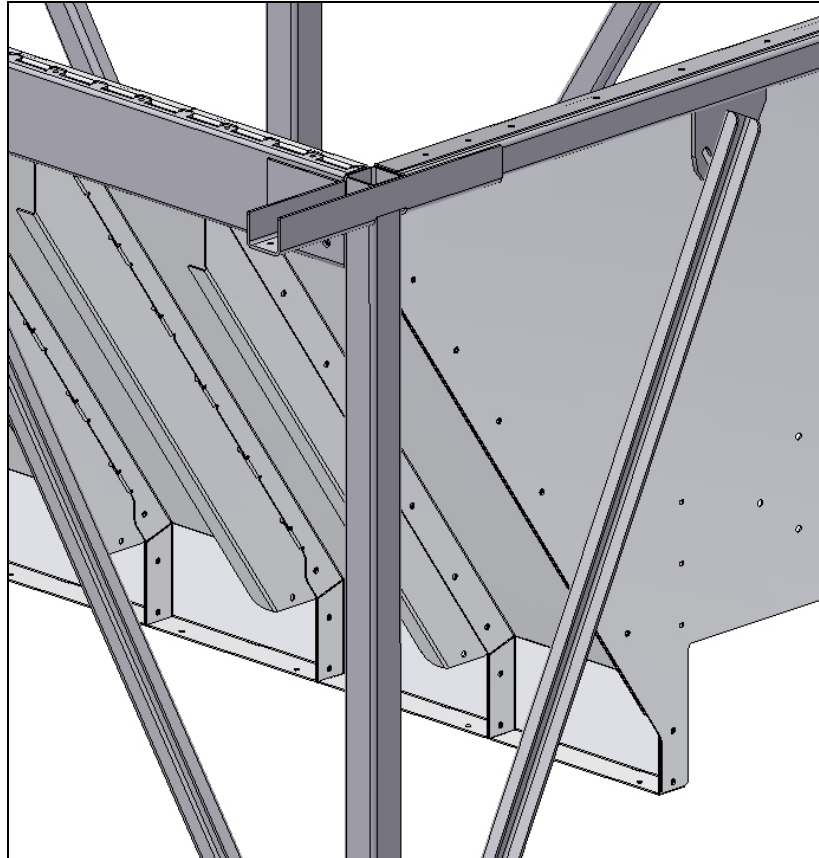


Picture 17

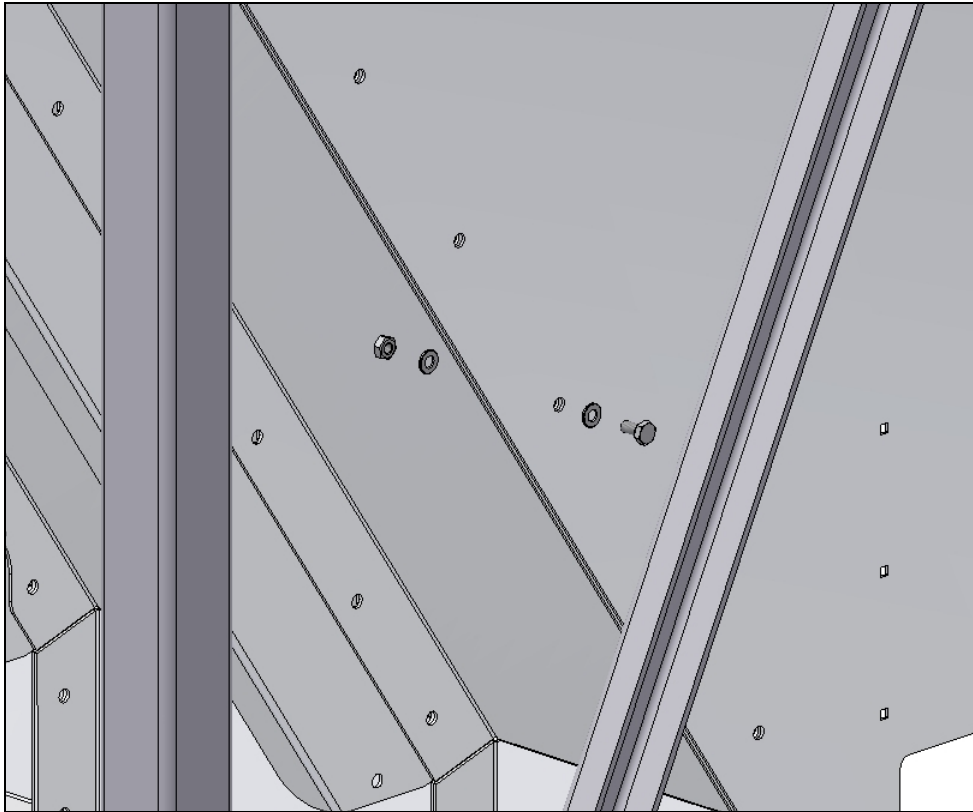
Mount the whole side of the silo. The last plate is a special plate. See picture 18.



Picture 18

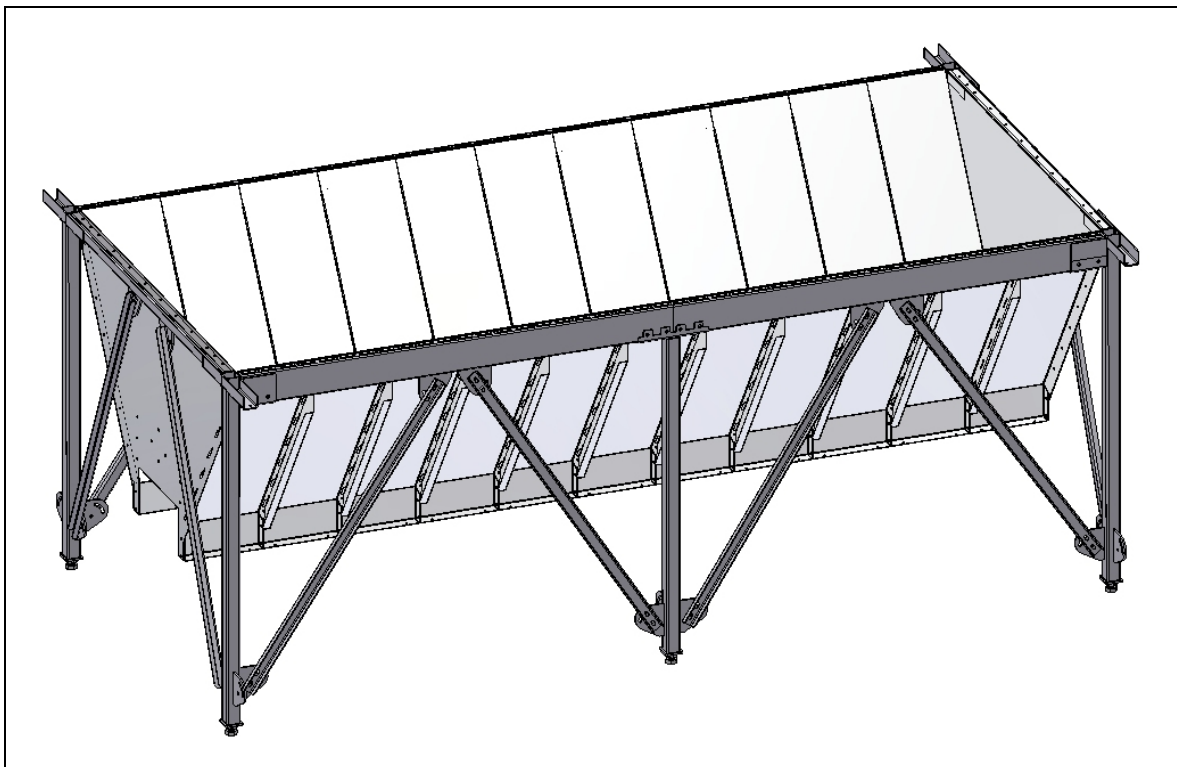


See picture 19



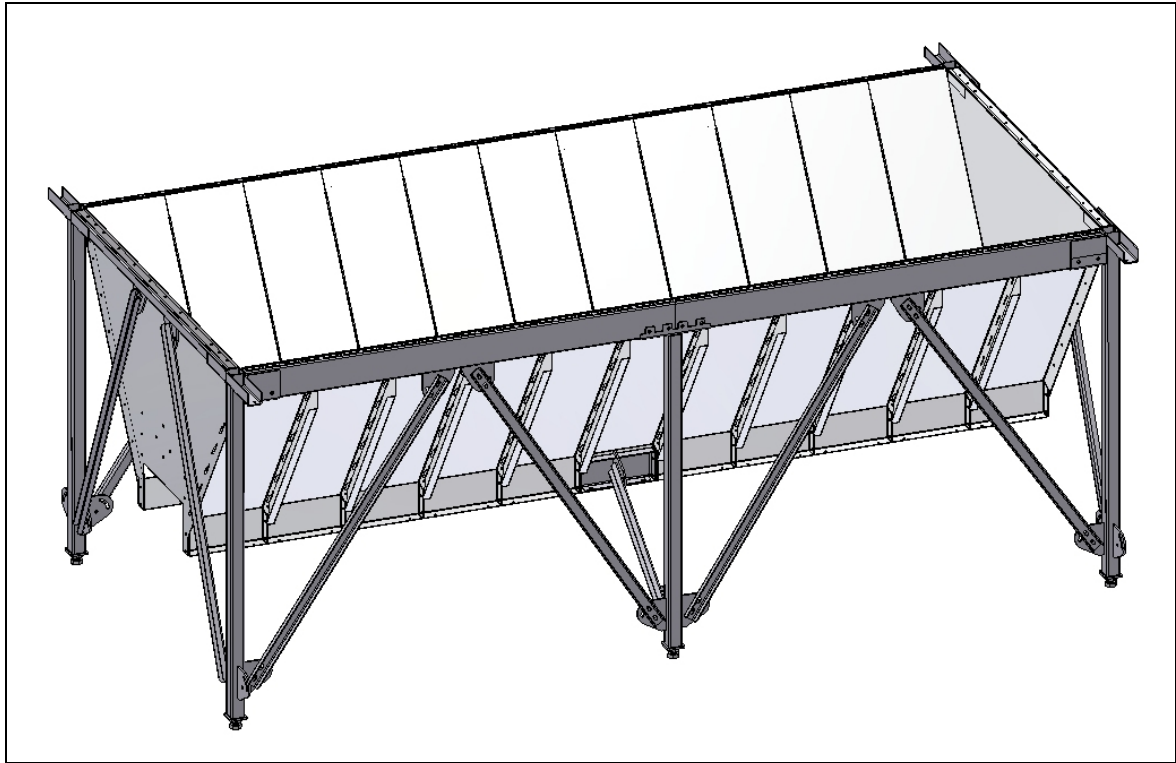
Picture 20

Mount the plate with screws.
Use: M10x25 screw, washer, lock-washer and a nut.

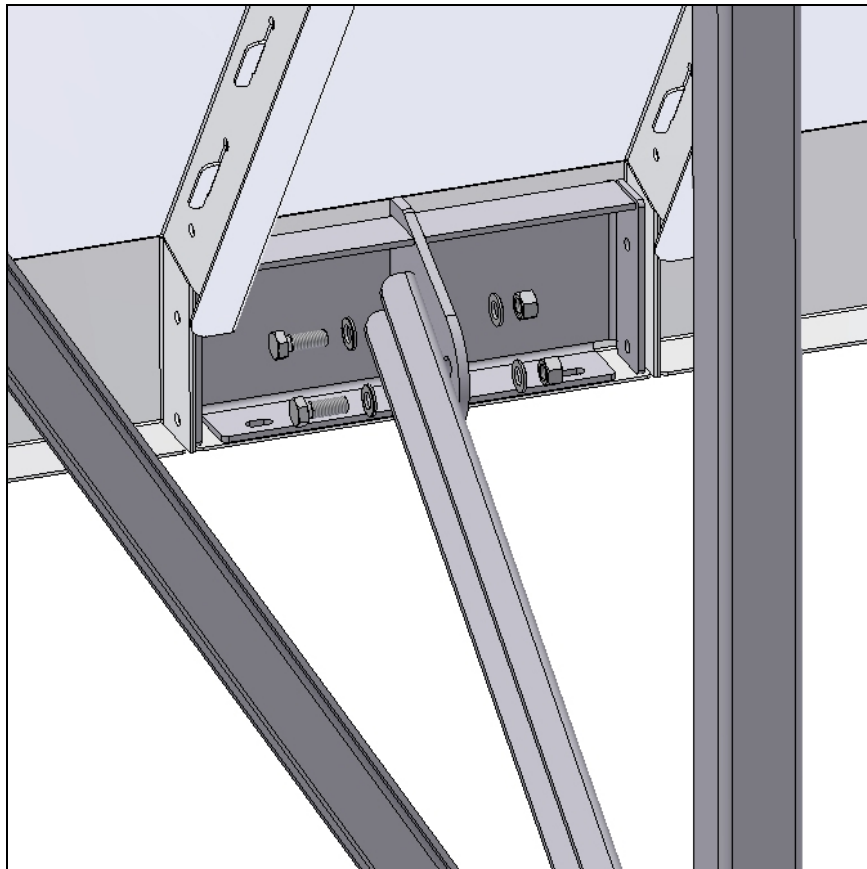


Picture 21

Now, mount the last side of the silo, in the same way as before.

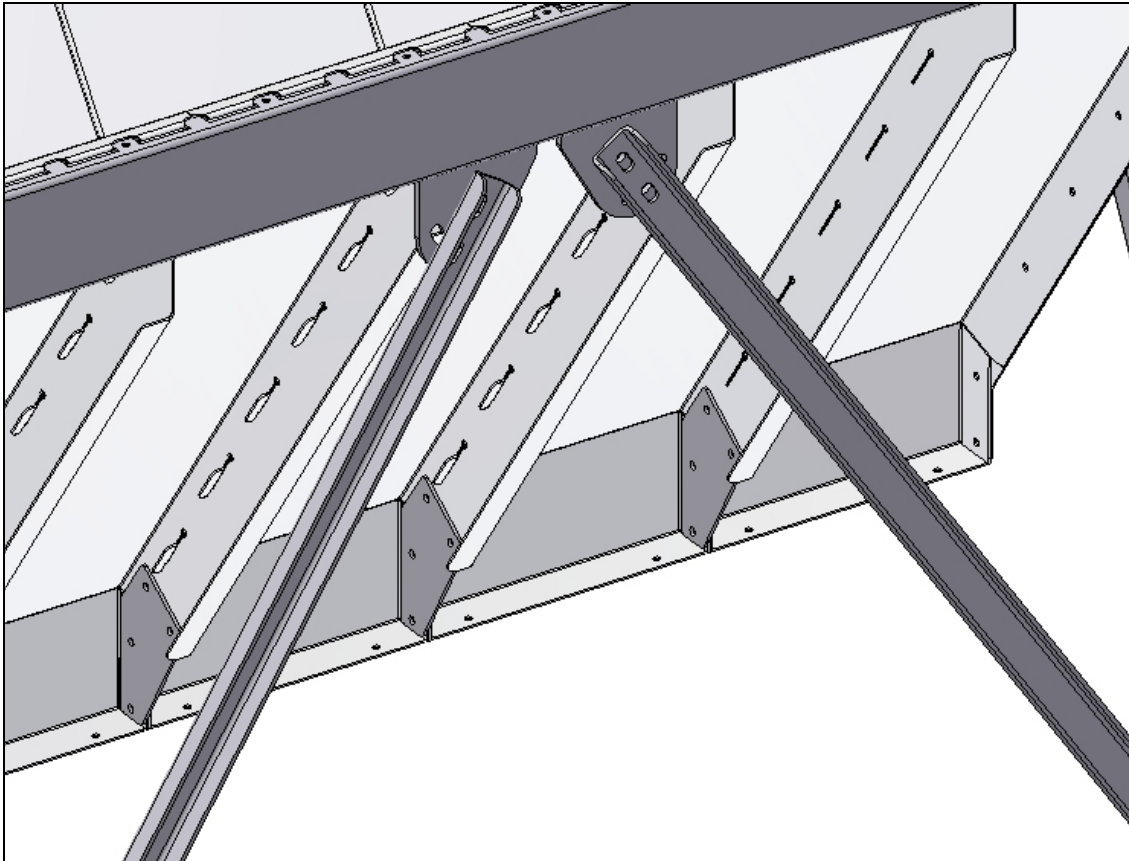


Picture 22

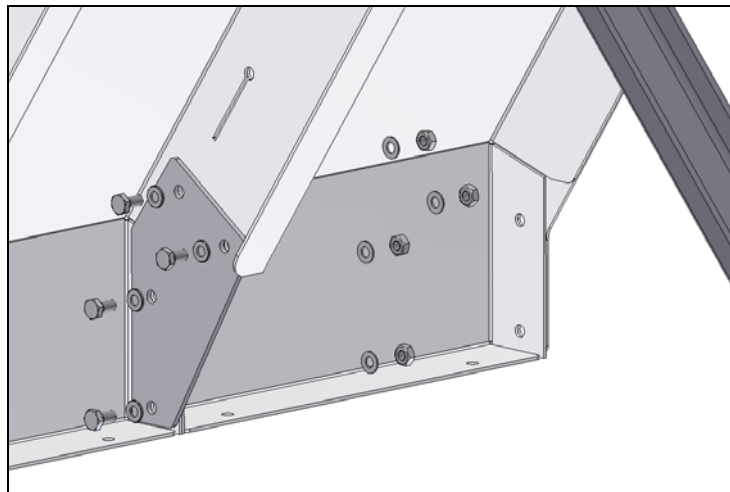


Picture 23

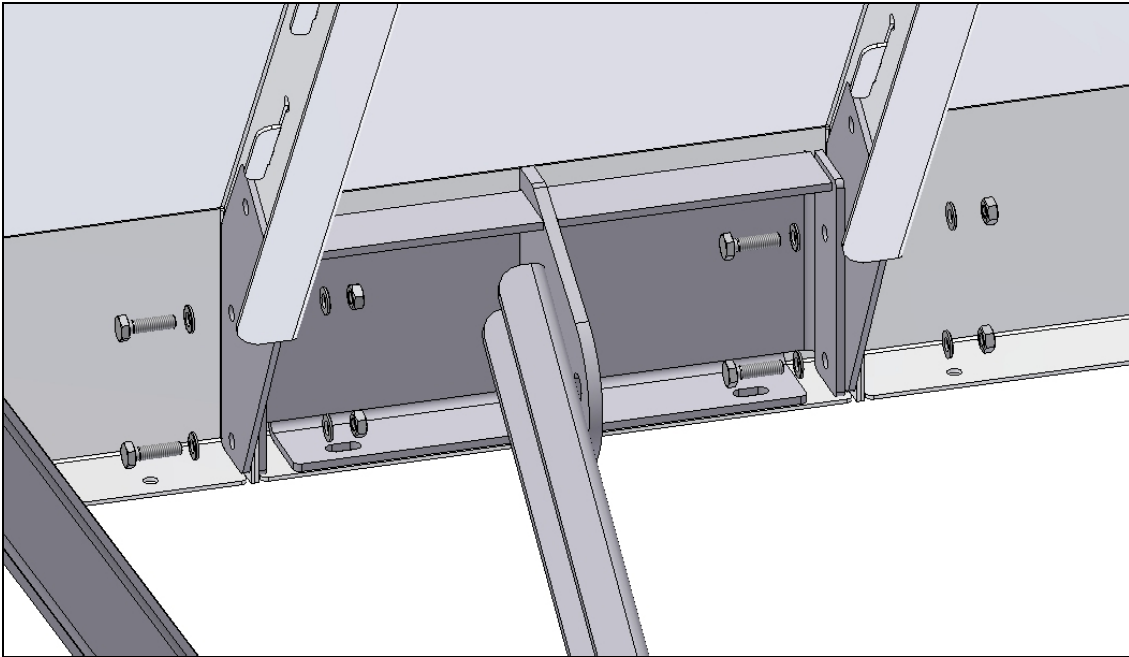
Use: M16x40 screw, washer, lock-washer and a nut.



Picture 24
Mount the plates.

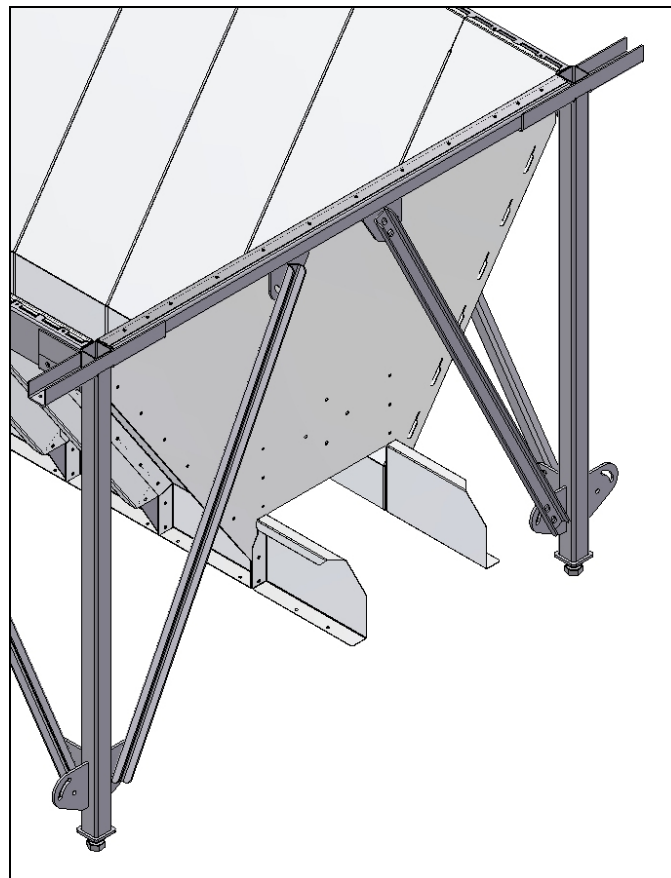


Picture 25
Use: M10x25 screw, washer, lock-washer and a nut.



Picture 26

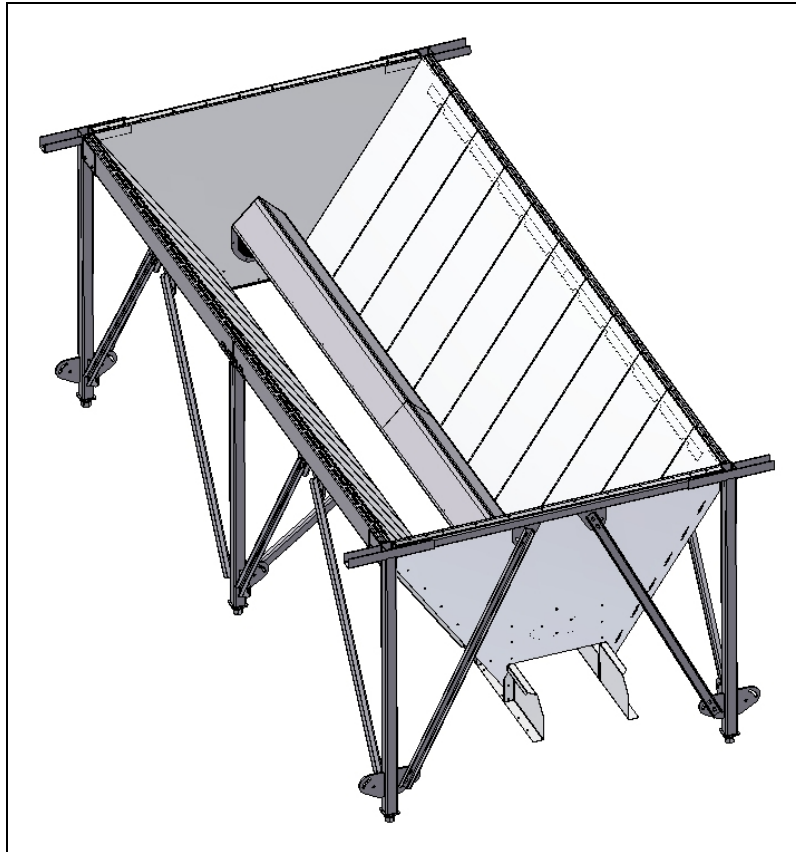
Use: M10x35 screw, washer, lock-washer and a nut.



Picture 27

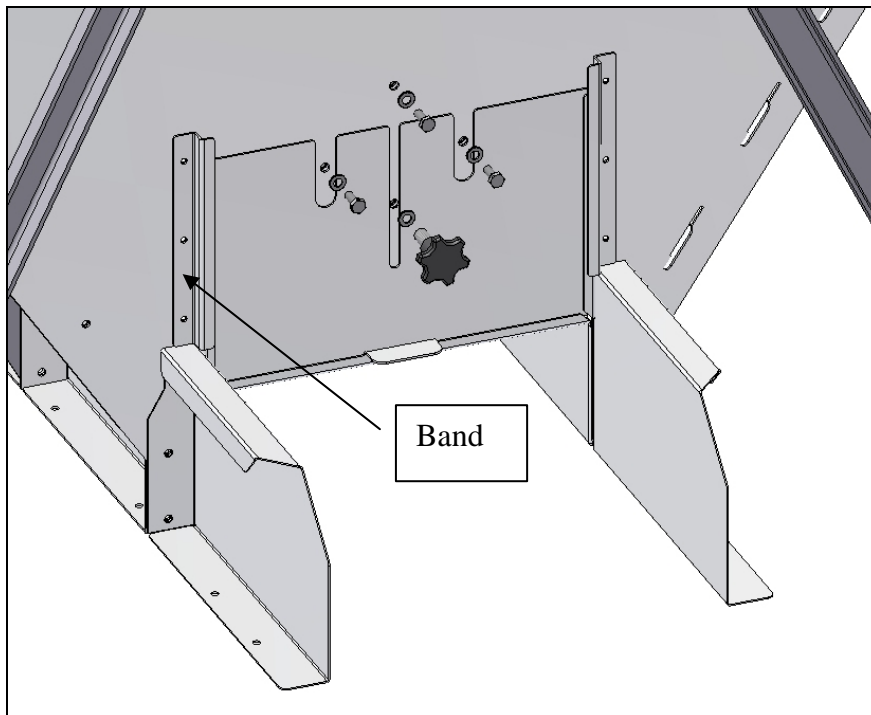
Mount the two side plates.

Use: M10x25 screw, washer, lock-washer and a nut.



Picture 28

Mount the triangular bar and the two bands for the hatch.

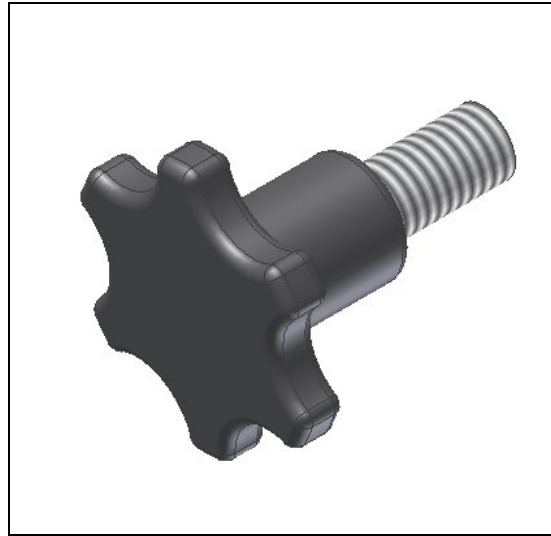


Picture 29

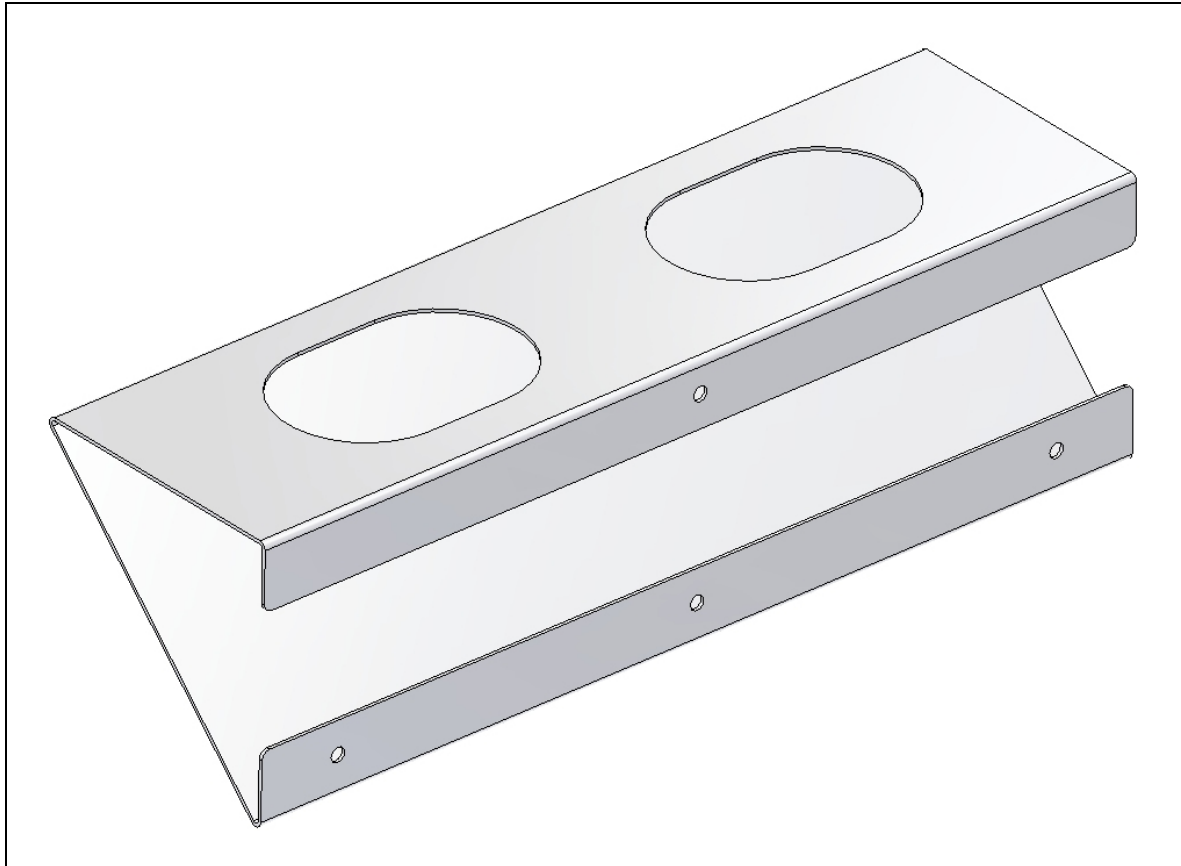
Fasten the triangular bar with: M12x30 screw and a lock-washer.

Mount the hatch with a handle. See picture 30.

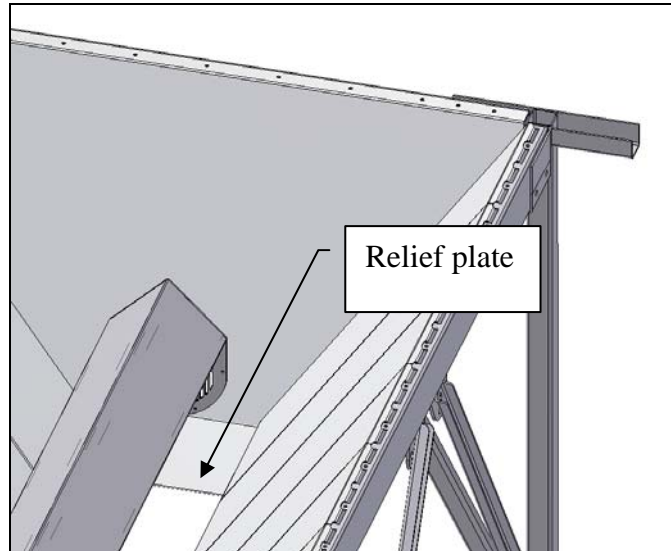
Use: M8x16 bolts (semi-finished), lock-washer and a nut for the two bands.



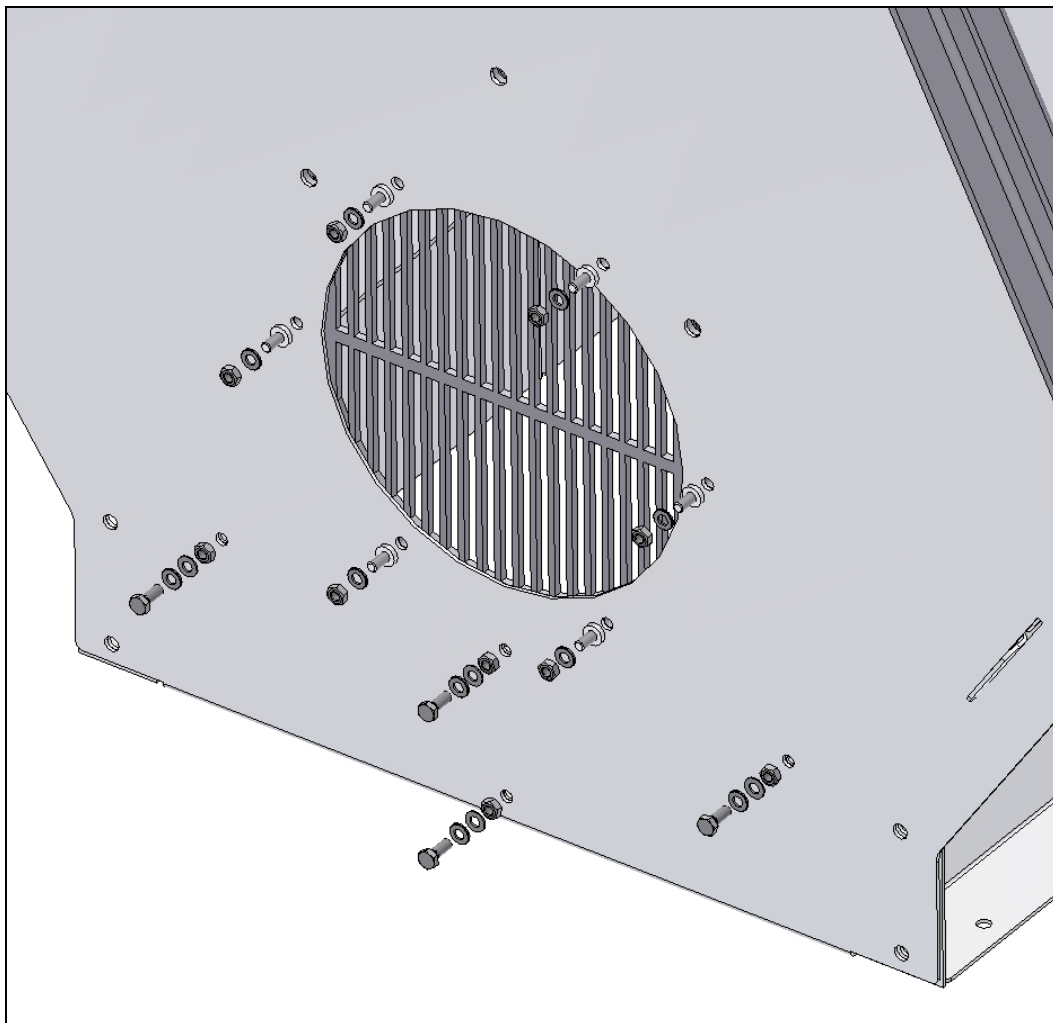
Picture 30
Handle



Picture 31
Relief plate



Picture 32

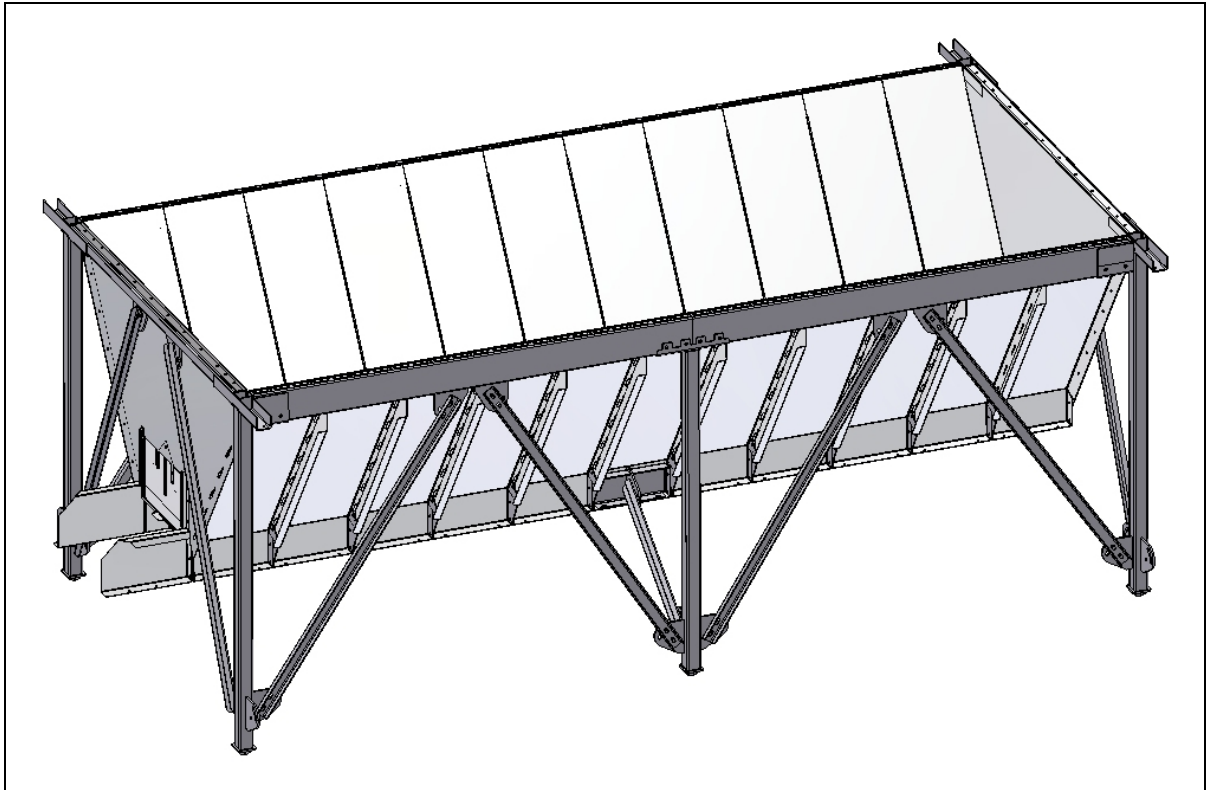


Picture 33

Mount the relief plate.

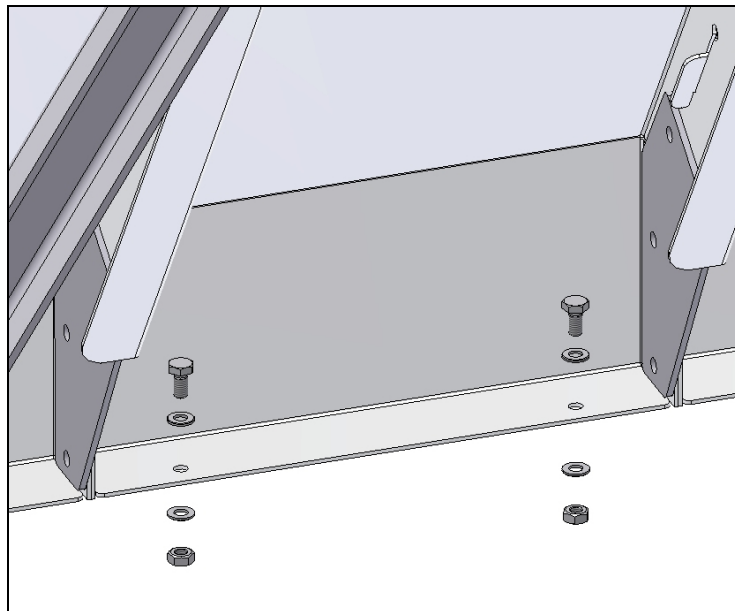
Use: M8x20 screw, washer, lock-washer and a nut.

Then use M8x30 screw with round flange-head, lock-washer and a nut for the grating on the triangular bar. The screws must be mounted inside out, see the picture.



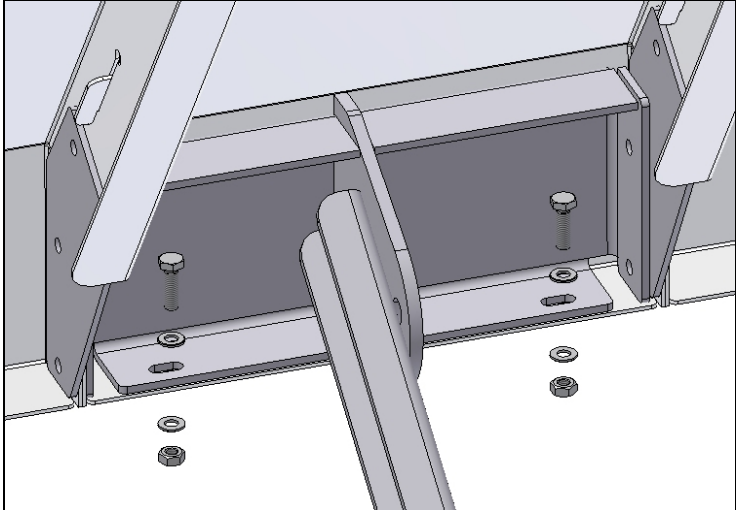
Picture 34

Now the silo is ready for mount of the conveyer
(the conveyer is not shown at the picture).

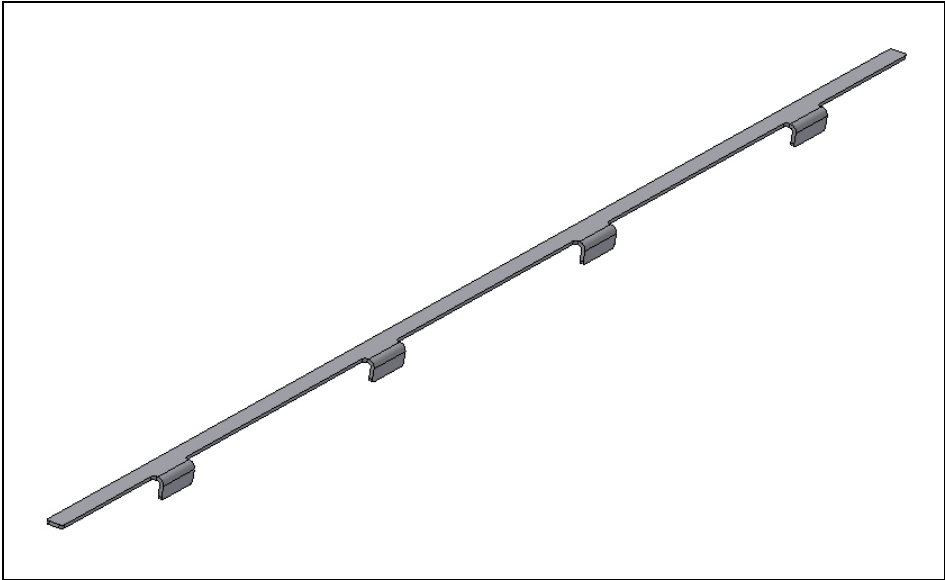


Picture 35

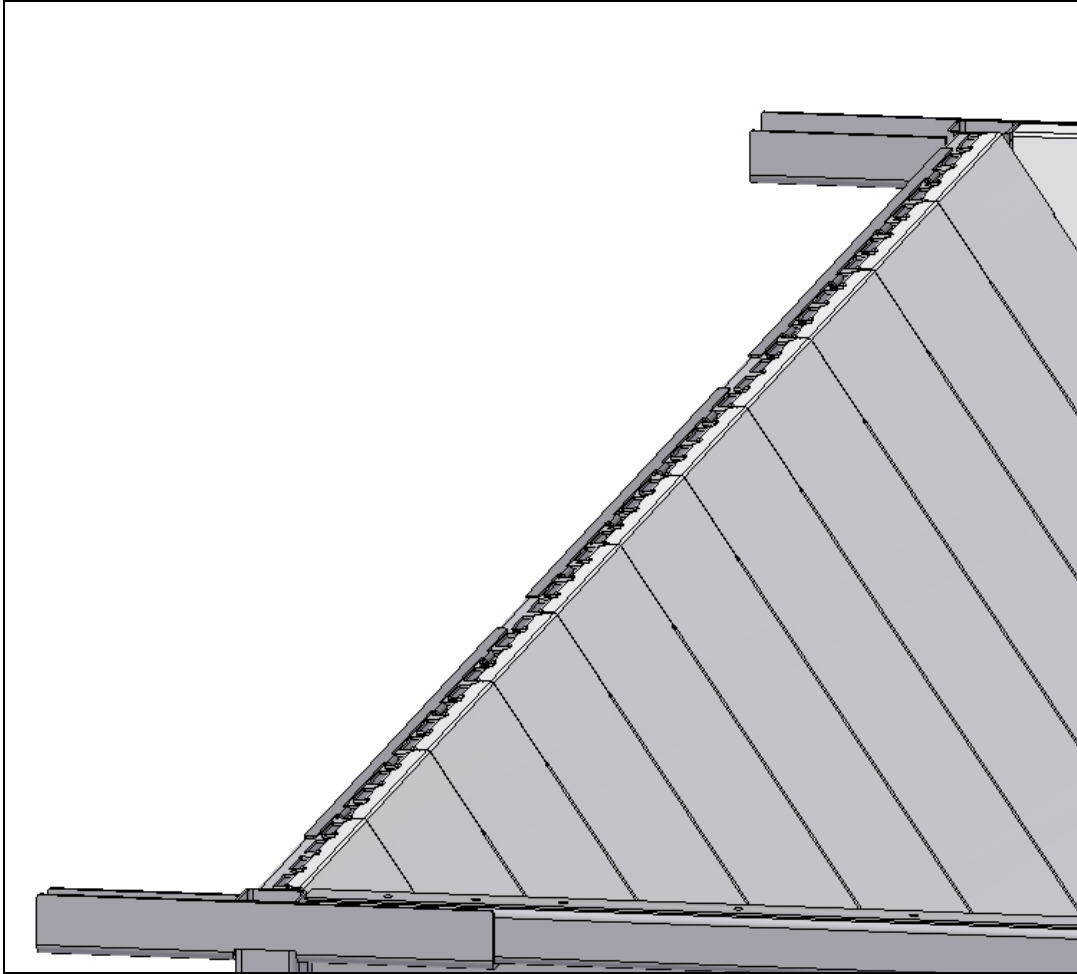
Mount the conveyer with:
M10x25 screw, washer, lock-washer and a nut.



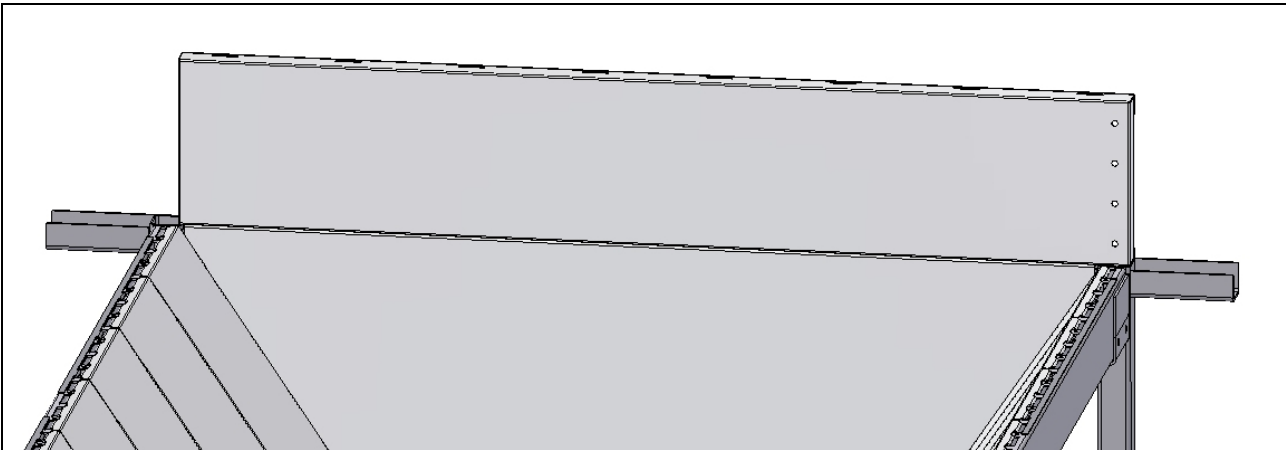
Picture 36
M10x35 screw, washer, lock-washer and a nut.



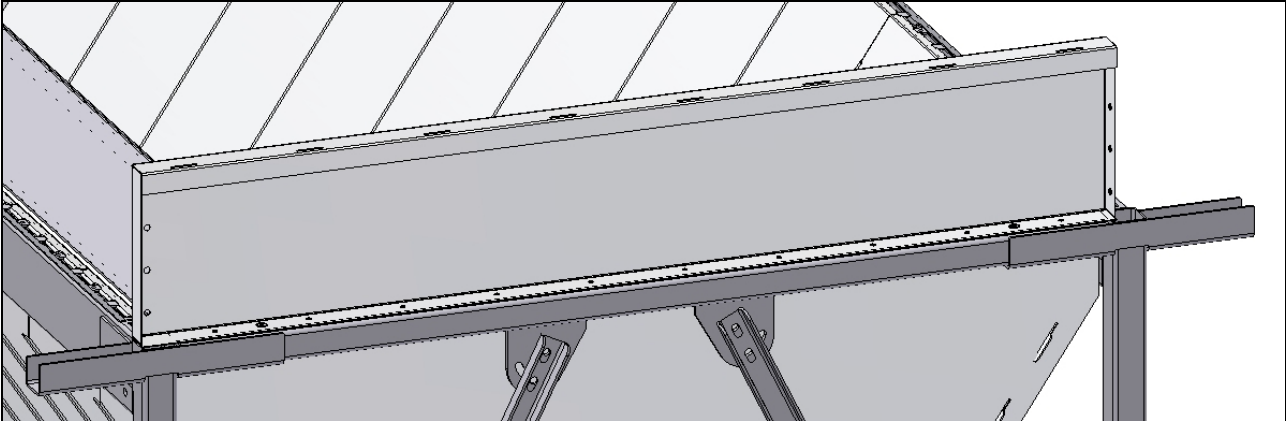
Picture 37
Spacer-plate



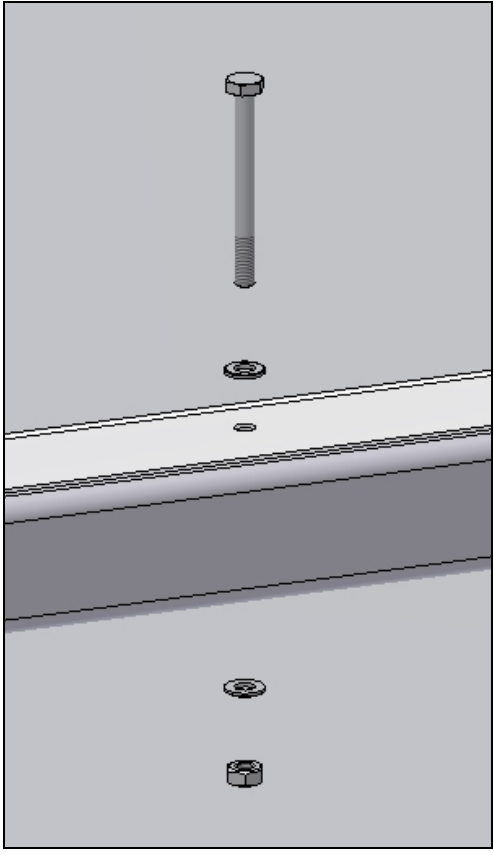
Picture 38
Mount the spacer-plates as shown at the picture.



Picture 39
Mount the first super-structure. See picture 40.



Picture 40



Picture 41

Use: M10x100 screw, washer, lock-washer and a nut.



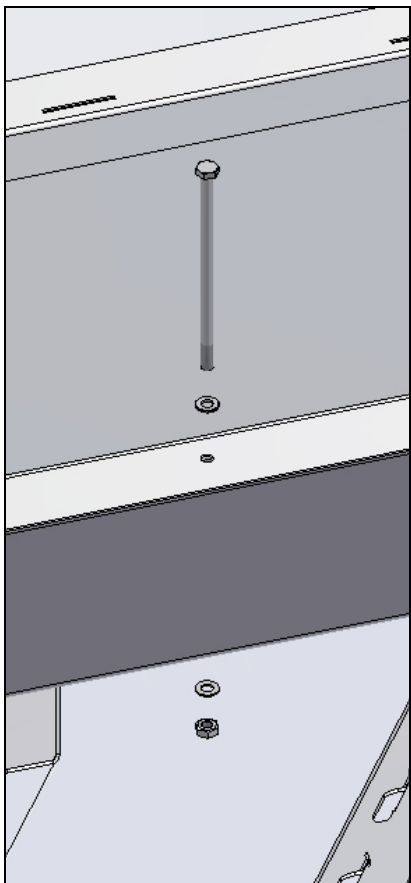
Picture 42

Also mount a super-structure in the other end.



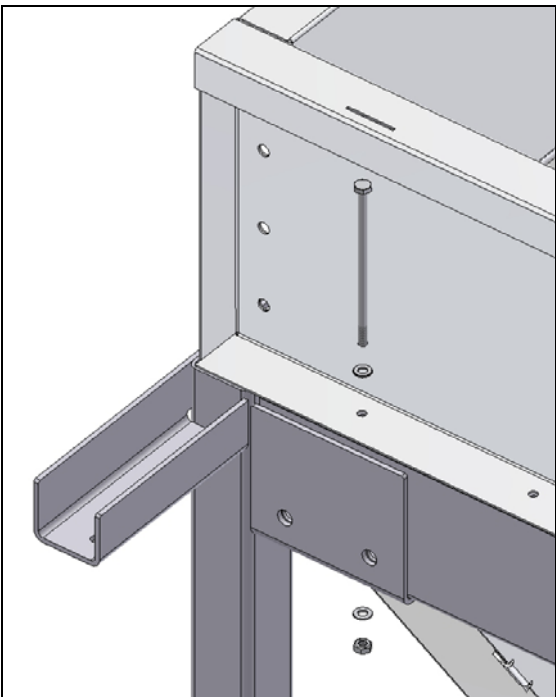
Picture 43

The two next super-structures are identical.



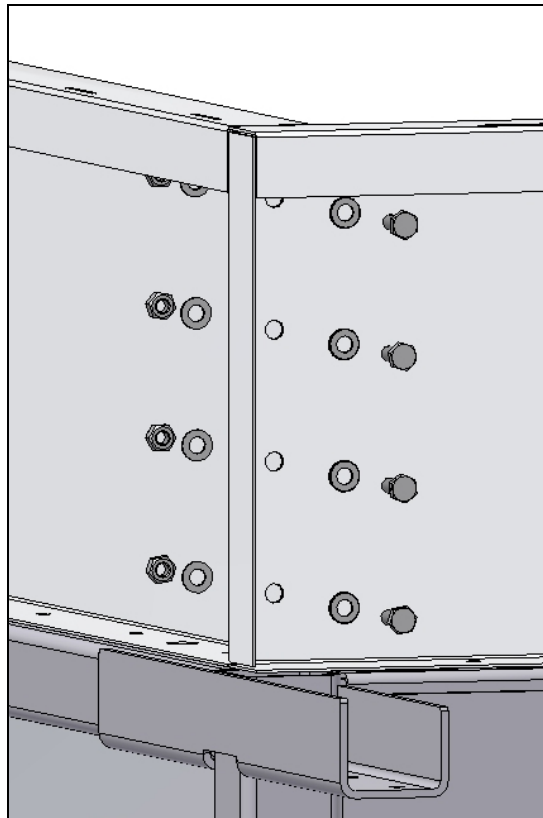
Picture 44

Use: M10x200 screw, washer, lock-washer and a nut.



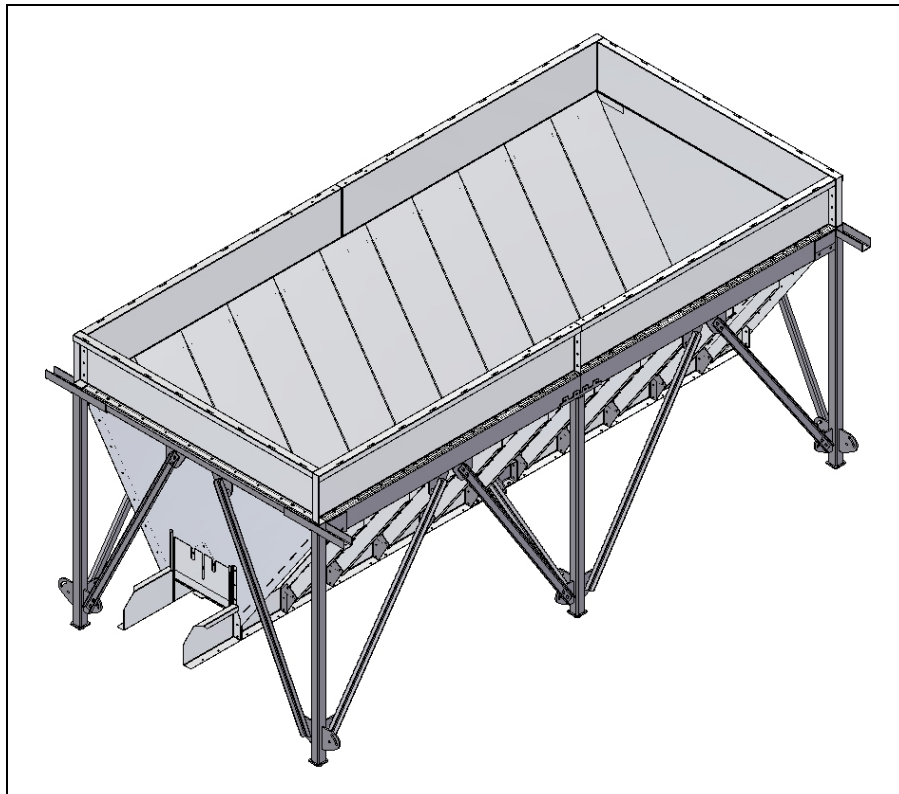
Picture 45

Use: M10x220 screw, washer, lock-washer and a nut, one set in every corner of the silo.
If the silo is an AVN651 or an AVN660 there must also be used these screws for the two legs in the middle of the silo.



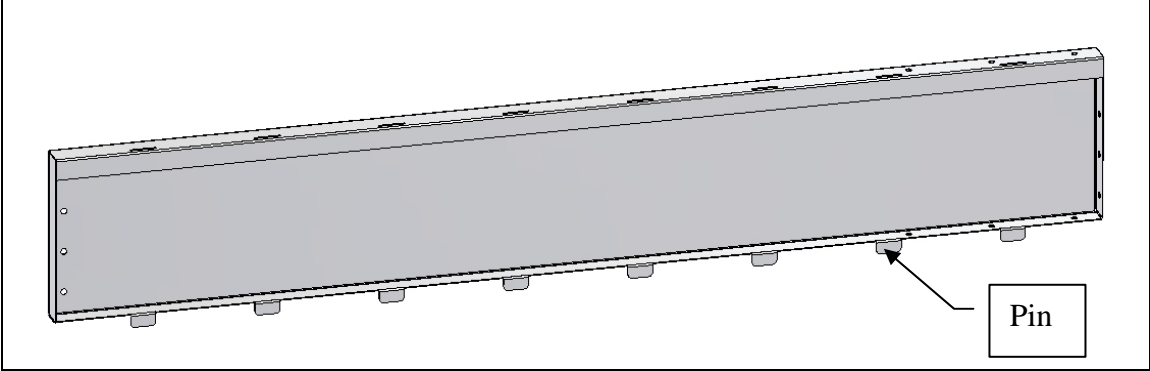
Picture 46

Use: M12x25 screw, washer, lock-washer and a nut.



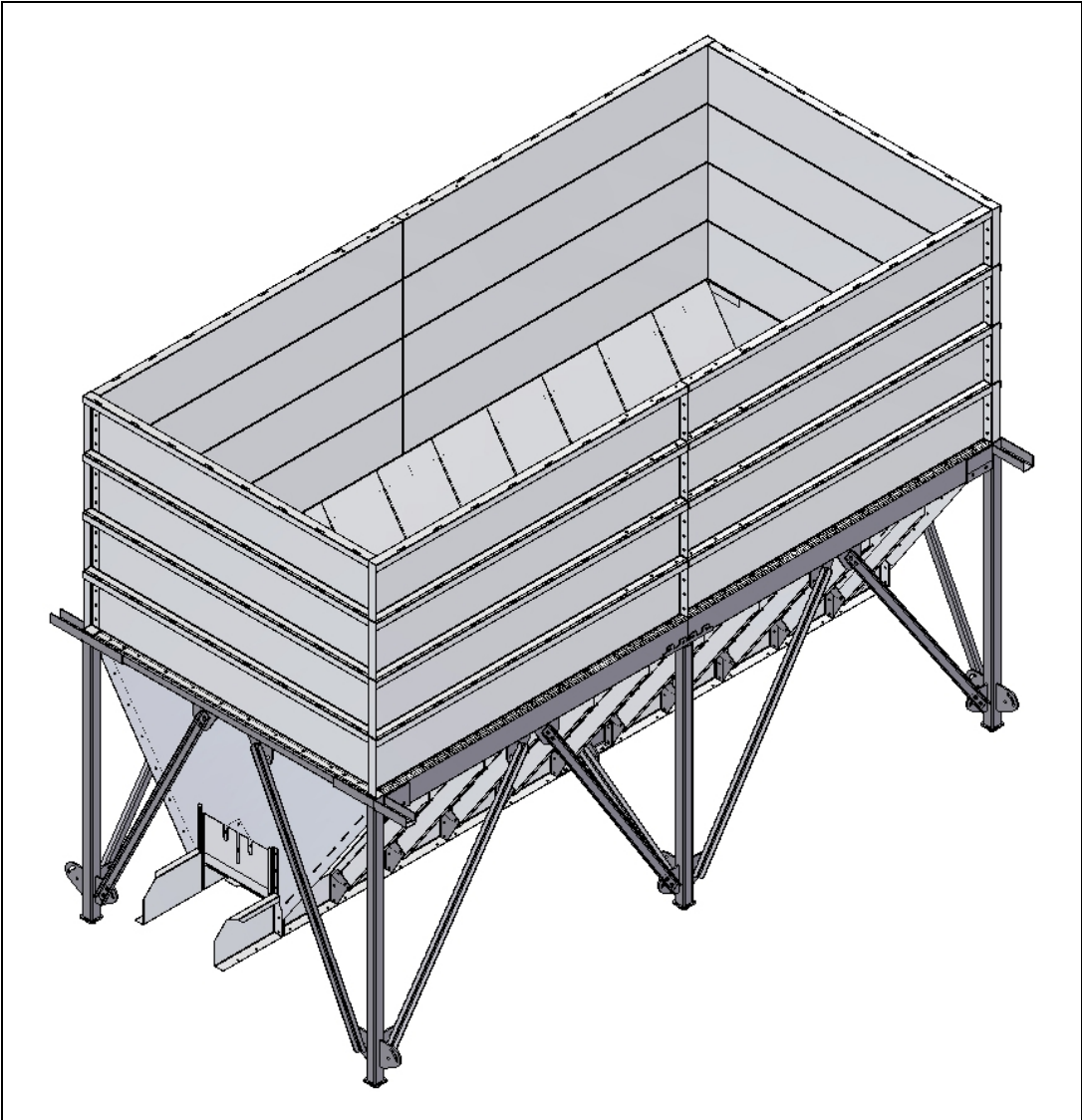
Picture 47

Mount the next to identical super-structures in the same way.



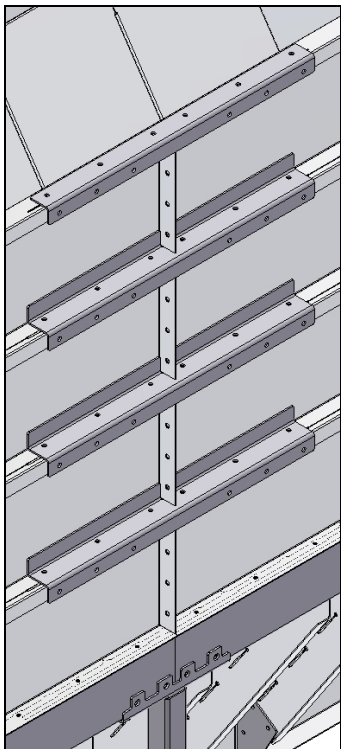
Picture 48

Now use the super-structures with the pins.

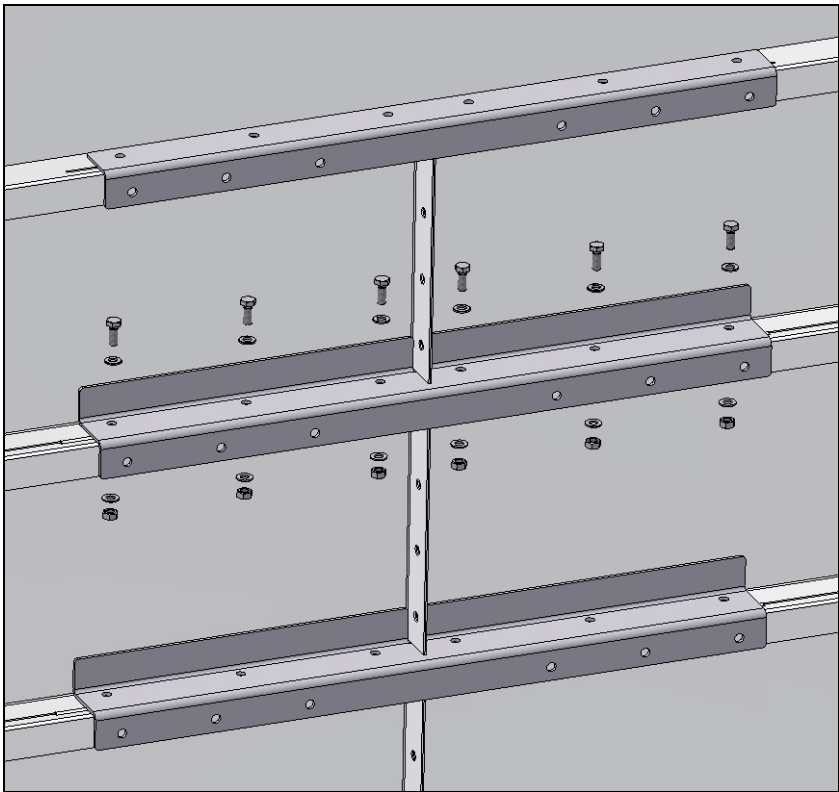


Picture 49

Mount the rest of the super-structures.

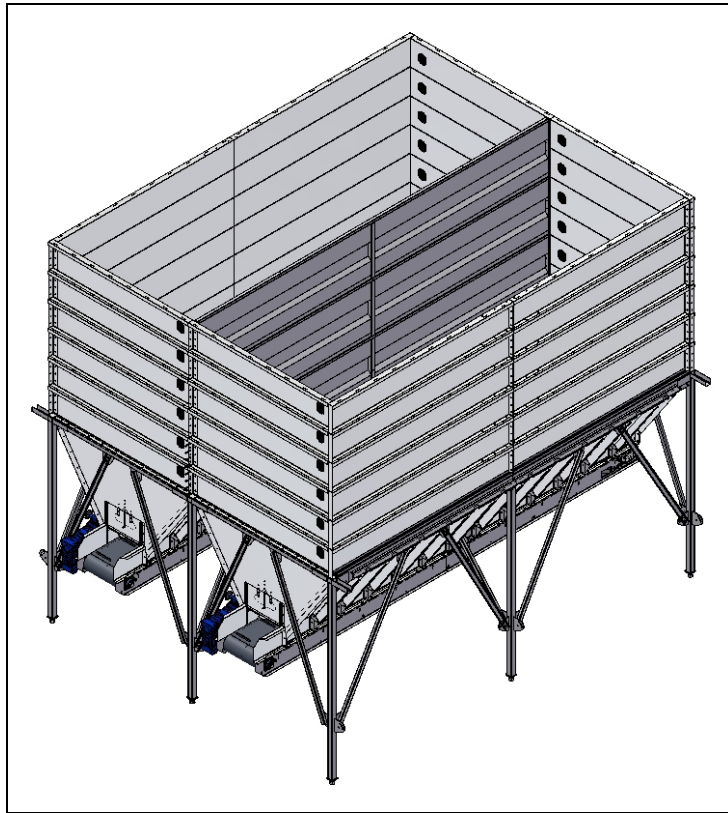


Picture 50
Mount the strengthen-plates.



Picture 51
Use: M12x25 screw, washer, lock-washer and a nut.

HOW TO BUILT TWO OR MORE SILOS TOGETHER

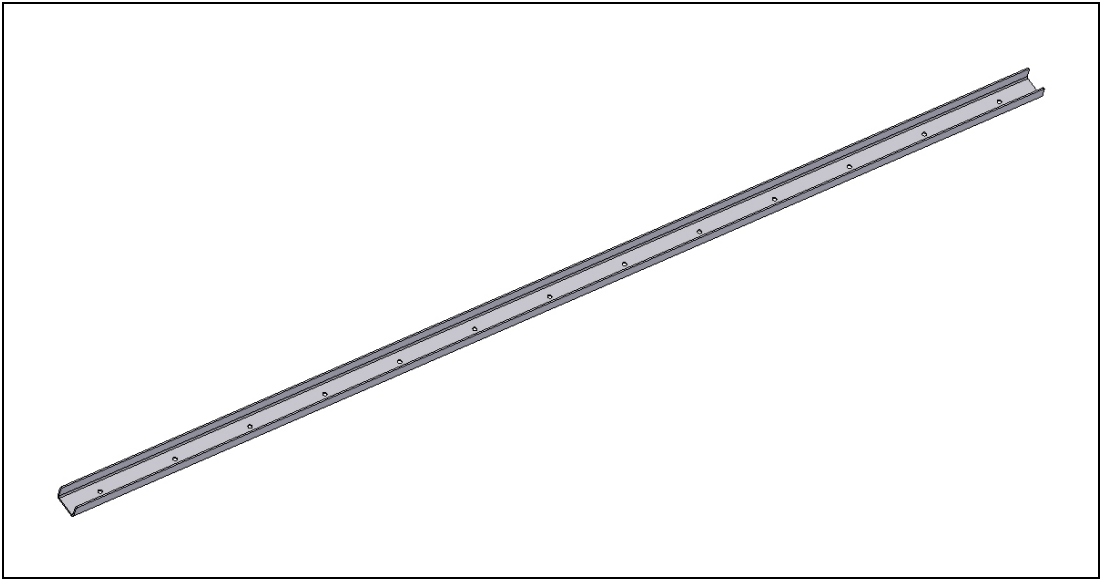


Picture 52

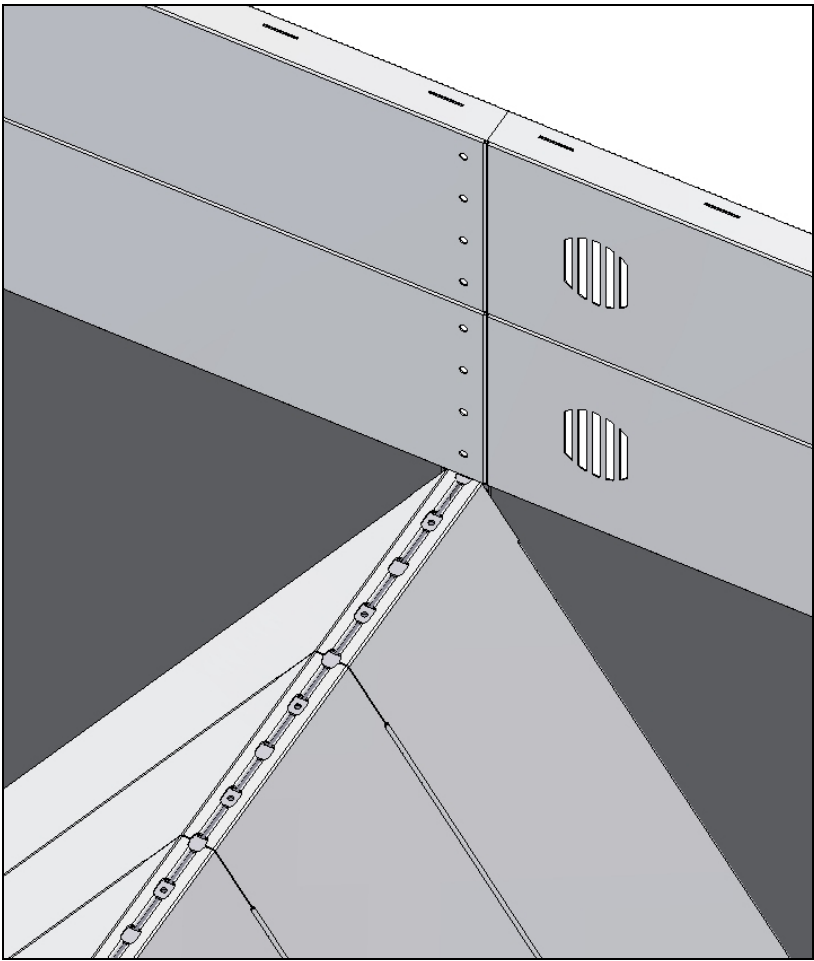
Two silos that have been built together, with special superstructure in the middle.



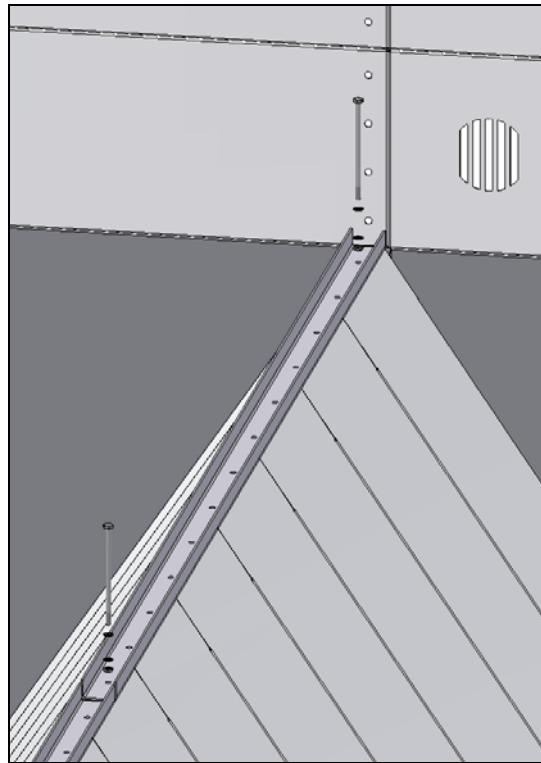
Picture 53



Picture 54
Profile that holds the middle superstructure



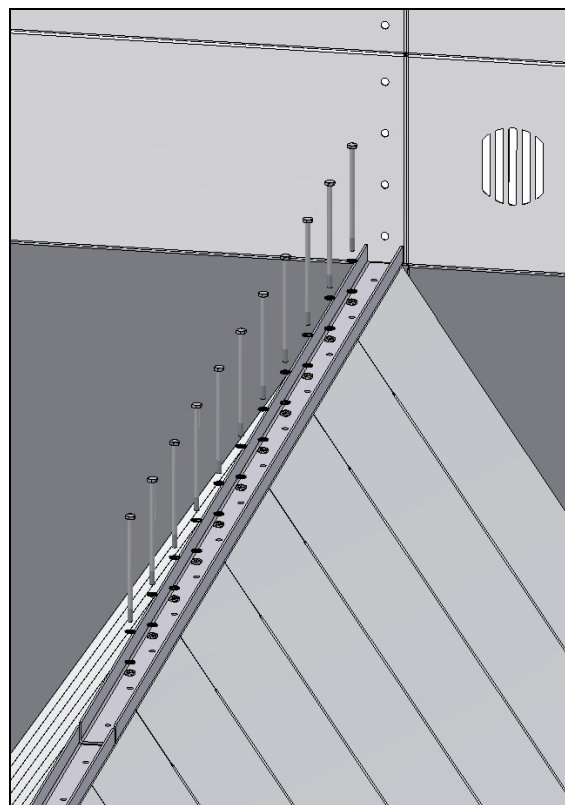
Picture 55
Mount the normal superstructure first



Picture 56

Mount the profile on the silo plates

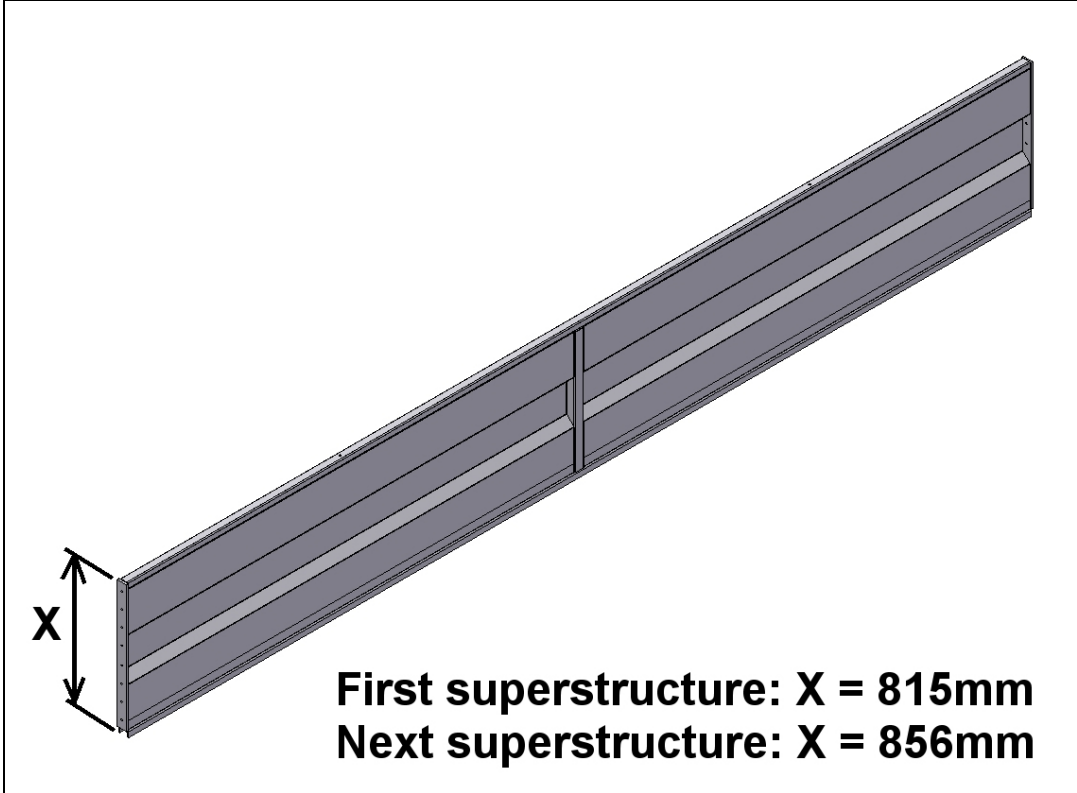
Use: M10x220 screw, washer, lock-washer and a nut in every end of the profile.



Picture 57

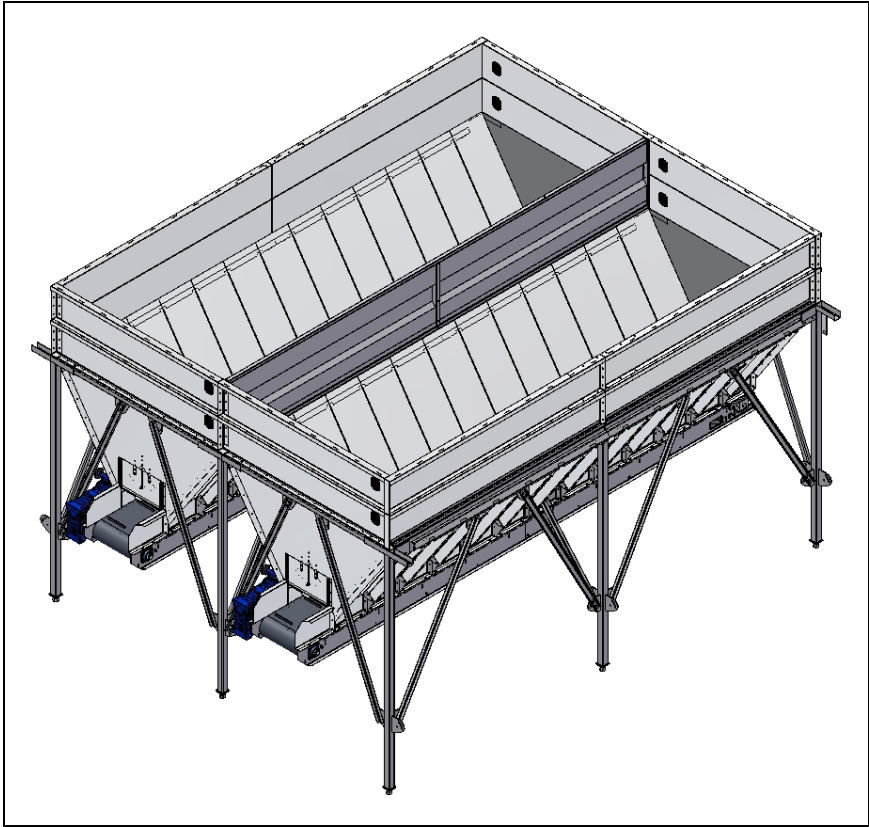
In the rest of the holes in the profile:

Use: M10x200 screw, washer, lock-washer and a nut.

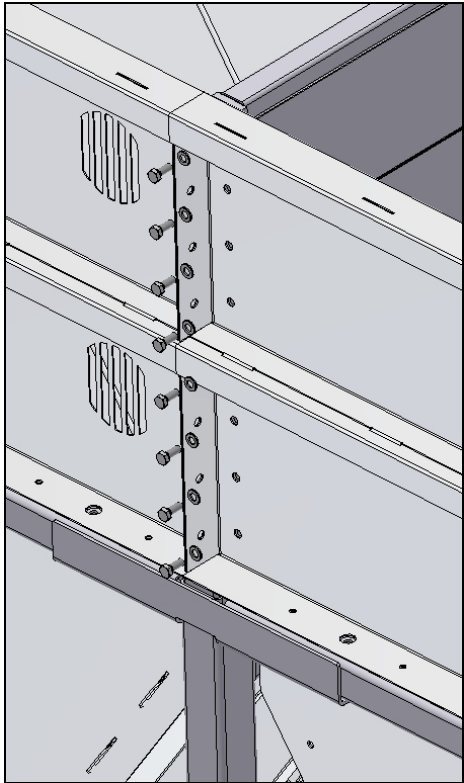


Picture 58

There are two versions of the middle superstructures. Always start with the superstructure that is **815mm** high.
All the other superstructures that have to be built on the top, are **856mm** high.



Picture 59



Picture 60

Use: M12x16 screw and a lock-washer.



Picture 61

Now all the other superstructures can be mounted.