

# SKALS

*- we'll sort it out!*

## INSTRUCTION MANUAL

Soilextractor type RK620/630



A/S SKALS MASKINFABRIK  
HOVEDGADEN 56  
DK-8832 SKALS, DANMARK  
Tlf.: +45 87 25 62 00  
Fax: +45 86 69 49 99  
E-mail: [skals@skals.dk](mailto:skals@skals.dk)  
<http://www.skals.dk/>

CE

## Contents

Contents .....	1
1.0 Purpose and scope of operations .....	2
2.0 Installation.....	2
2.1 Installation of accessories.....	2
3.0 Operation.....	2
4.0 Pictograms.....	2
5.0 Lubrication and maintenance .....	3
5.1 Cleaning .....	4
6.0 Packing and transport information .....	4
7.0 Transport and lifting instructions .....	4
8.0 Spare parts.....	5
9.0 Declaration of conformity with EU .....	8

## 1.0 Purpose and scope of operations

Soil extractor Type RK620/RK630 is designed for cleaning potatoes, onions and similar products.  
Normal operational temperature: -15°C to + 40°C

## 2.0 Installation

In order to ensure smooth and steady operation, it is imperative that the soil extractor machine stands upright on a flat surface, supported evenly on all four legs. Set the adjustable legs to achieve a level position.

Connect the electricity supply in accordance with local regulations. Connect the electricity supply through a motor protection relay which corresponds to the size of the motor.

Check the flow direction. If the direction of flow has to be altered, switch 2 phases in the power supply.

### 2.1 Installation of accessories

Follow instructions for the installation of accessories.

#### Support frame

Place the frame on a level base.

Lift the soil extractor and lower on to the frame, the legs fitting over the four pegs on the frame.

Loosen the leg bolts, adjust the legs on the frame until the soil extractor machine is level. Tighten the bolts on the legs again.

## 3.0 Operation

Check that the soil extractor machine is correctly placed in relation to other machines in the production sequence.

## 4.0 Pictograms

**Danger!** Moving web-belt at the outlet end. Keep a safe distance.

## 5.0 Lubrication and maintenance

All bearings are lubricated for life and need no further maintenance..

The worm drive type NMRV is lubricated for life with IP TELIUM VSF, a synthetic grease suitable for a normal temperature range of -15°C to + 40°C.

	<b>Syntetisk</b>	<b>Mineralsk</b>
IP	Telium VSF	Mellena oil 220
Shell	Tivela oil SC320	Omala oil 220
Agib	Blasia S320	Blasia 220
Mobil	Glygoyle 30	Mobilgear 220
Castrol	Alphasyn PG 320	Alpha 220

Change oil after 5,000 production hours.

### Variator

The variator is mounted between the worm drive and the motor. It must always be kept filled with long life oil and should be topped up to the middle of the observation glass.

Change the oil every 8 years.

It is imperative that there is always the correct amount and type of oil in the variator.

Recommended oils:

IP	Transmission V. E.
IP	A.T.F. Dexron Fluid
AGIP	A.T.F. Dexron
BP	Autran DX
Chevron	A.T.F. Dexron
ESSO	A.T.F. Dexron
Fina	A.T.F. Dexron
Mobil	A.T.F. 220
Shell	A.T.F. Dexron
Castrol	TQ Dexron II.

The gear is always supplied, filled with oil.

Shell	Macoma R220
Exxon	Spartan EP320
Texaco	Meropa 220
Mobil	Mobilgear 630
BP	Energol GR-XP220

**Change the oil after 5,000 hours of operation, or each year, whichever comes first.**

## 5.1 Cleaning

With reference to the Danish Plant Directorate's Order No. 965 of 13 December 1993 (p. 6).

- 2.3.3. Seed potato growers with contained propagation must clean and disinfect all sorting and ancillary equipment after each new variety. Disinfecting should be carried out using a product approved by The Danish Institute of Plant and Soil Science.
- 2.3.4. Companies authorized to sort potatoes and who also have the authorization to propagate potatoes, must clean and disinfect sorting machinery etc. which is under the control of The Danish Plant Directorate before the sorting of own propagation is commenced. Disinfecting should be carried out using a product approved by The Danish Institute of Plant and Soil Science.
- 2.3.5 Premises and machinery etc. must be cleaned and disinfected each year before 30 June. Disinfecting must be carried out using a product approved by The Danish Institute of Plant and Soil Science.

In other countries, customers must conform to relevant, local food and hygiene regulations.

## 6.0 Packing and transport information

Number of units:

The soil extractor is packed as one complete unit.

**Weight:**

RK620: 250 kg

RK630: 300 kg.

<b>Dimension:</b>	<b>Length</b>	<b>Width</b>	<b>Height</b>
RK620	2180 mm.	920 mm.	1200 mm.
RK630	3180 mm.	920 mm.	1200 mm.

## 7.0 Transport and lifting instructions

Should it be necessary to lift the soil extractor machine, this **must** be carried out by using the nylon straps fitted to the machine's four legs, as shown in the illustration below (fig. 1).

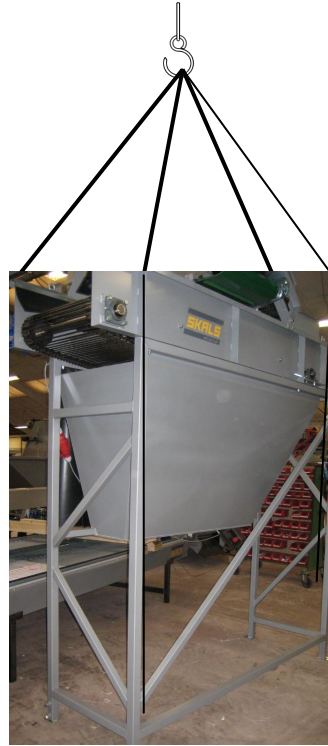


Fig. 1

## 8.0 Spare parts

When ordering spare parts, state machine type, serial no. and, if possible, position no.

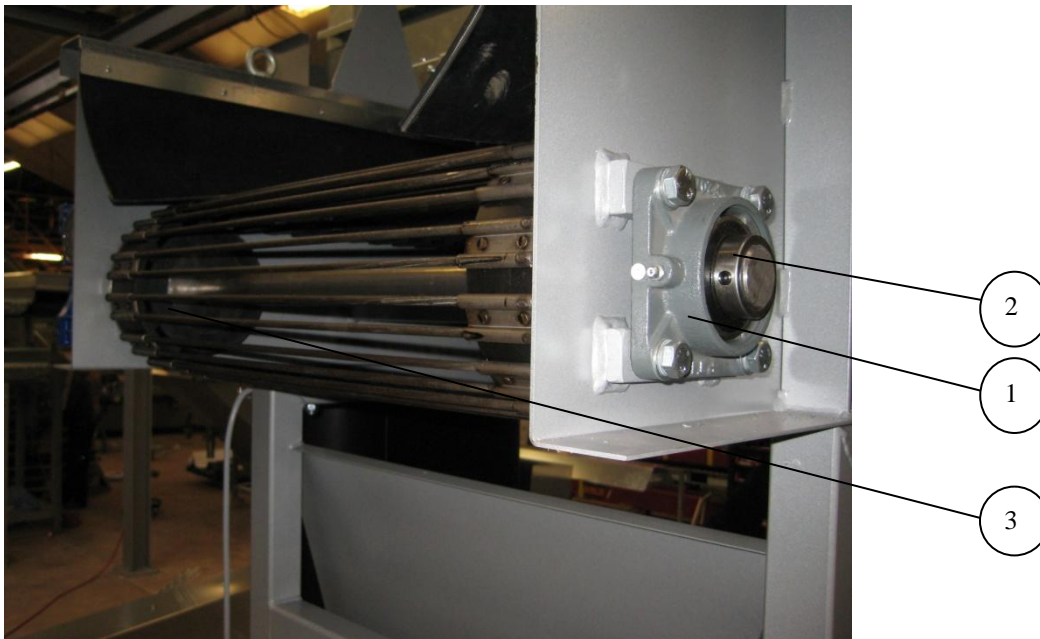


Fig. 2



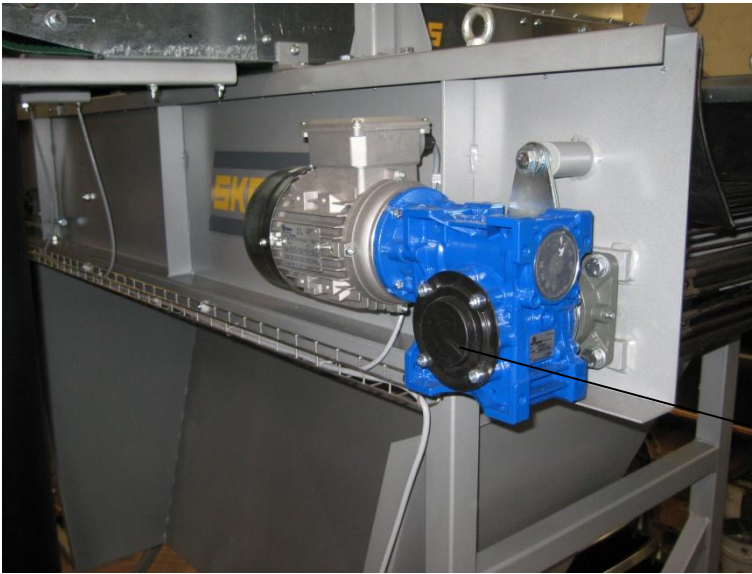


Fig. 3



Fig. 4



Fig. 5

<b>Page</b>	<b>Fig. No.</b>	<b>Pos. No</b>	<b>Description</b>
6	2	1	Bearing house
6	2	2	Bearing
6	2	3	Drive rubber wheel
7	3	4	Gear motor
7	4	5	Plastic wheel
7	4	6	Chain belt
7	5	7	Adjusting plate
7	5	8	Adjusting screw



## 9.0 Declaration of conformity with EU

<b>Manufacturer</b>	
Firm:	A/S Skals Maskinfabrik
Address:	Hovedgaden 56 8832 Skals, Denmark
Telephone:	87 25 62 00

declares herewith, that

<b>Machine:</b>	<b>Soil extractor</b>
Brand:	<b>RK620/630</b>
Type, serial no., year:	

Is manufactured in accordance with the decisions of the Councils Directives:

- 1 Machinery Safety – Directive 98/37/EC
- 2 Low Voltage Equipment Directive (LVD) 2006/95/EEC
- 3 Electromagnetic Compatibility (EMC) Directive 89/336/EEC and 93/68/EEC as amended.

<b>Title:</b>	Productions Manager
Name:	Søren Lund Madsen
Firm:	A/S Skals Maskinfabrik

Date: \_\_\_\_\_

Signed:  \_\_\_\_\_